

Product Catalog

THE GLOBAL STANDARD IN SUSPENDED ACCESS.
DESIGNED, BUILT, TRUSTED WORLDWIDE.

Welcome to our comprehensive product catalog, showcasing the pinnacle of suspended access equipment solutions designed and manufactured by Sky Climber®

Suspended Access Systems | Temporary | Permanent
Hoists | Rigging | Custom Solutions

7th Edition



SKY CLIMBER®
Access Innovations
Since 1955

Explore Full Catalog at [skyclimber.com](https://www.skyclimber.com)



About Sky Climber

Sky Climber is your dependable source for industry leading powered suspended access solutions. As a globally recognized manufacturer and distributor since 1955, we take pride in our vertical integration—designing and crafting our own equipment. This grants you a seamless experience with high-quality products and services. Our international reach is fortified by facilities and operations in the United States, Belgium, and China.

Our clients trust us for our robust portfolio of suspended access products. Our focus is tailored to your unique requirements, managed by adept local teams. We boast an extensive assortment and huge inventory of equipment, coupled with a comprehensive array of commercial and industrial support services. Unmatched safety standards, operational excellence, project management prowess, and cutting-edge engineering and information systems are the cornerstones of Sky Climber.

At Sky Climber, we deeply value the trust our clients place in us. Through continuous investment in our operations, we deliver products and services that set the standard for reliability. Our commitment to quality and innovation has made us a trusted partner to some of the world's leading companies.

Our commitment to excellence is evident in:

- *The production of tens of thousands of Sky Climber hoists*
- *Next day shipment from our vast inventory of stocked equipment and parts.*
- *Global operation centers*
- *A formidable force of highly skilled and accountable support personnel*
- *Round-the-clock technical support*
- *Factory-trained and certified staff*
- *Engineering expertise recognized worldwide*
- *A dedicated risk management department*
- *Meticulously detailed inspection and service protocols*

Sky Climber's global presence, vast inventory, skilled workforce, and unwavering commitment to service excellence are a guarantee of unparalleled reliability.

So, what does this signify for you? As a valued client of Sky Climber, be it longstanding or new, our aim is to enhance your operational efficiency through:

- *Maximizing operational time*
- *Boosting productivity*
- *Minimizing total cost of ownership*
- *Ensuring the safest operations for your work force*

Get in touch with Sky Climber for your next access challenge—and share the experience by referring a colleague. Discover firsthand why industry leaders trust Sky Climber for excellence in access solutions.



Multi-Industry Solutions

Sky Climber delivers unmatched proficiency in all temporary & permanent powered access applications. Our prowess extends to skyscrapers, industrial infrastructures including bridges, water towers, offshore oil rigs, wind turbines, dams, power stations, nuclear facilities, and an extensive array of other vital structural sites. Sky Climber is the go-to provider for safe and efficient maintenance solutions for an eclectic range of structures.



Fall Protection Solutions

Safety is paramount in work-at-height business and is woven into the fabric of our daily operations. For over 70 years, Sky Climber has been the pillar on which contractors have relied for solutions that are not only safe but also profitable. Sky Climber boasts a comprehensive array of fall protection solutions, which have undergone meticulous testing and certification, meeting and exceeding the stringent standards set by OSHA and ANSI.



Training Solutions

Day in and day out, a plethora of companies utilize Sky Climber products to access their work areas. We are consistently proactive in addressing our clients' needs by offering an array of training courses to assist them in adhering to jobsite, local, state, federal, and provincial regulations. Sky Climber has honed the skills of thousands of operators and supervisors through our Competent Person Training Programs, which are specially tailored for the commercial building sector, as well as through a distinct program exclusively designed for industrial clientele.



International Coverage

Beyond our facilities in the U.S., Sky Climber's solutions are accessible globally through our locations in Belgium, China, and across growing network of Authorized Dealers.

We distribute suspended scaffolding equipment to more than 70 countries around the world.

Table of Contents

About Sky Climber.....	2	Engineering Services and Solutions	30
LNX Hoist	5	T-Boom	31
Compact Electric Hoist	7	Rolling Roof Rigging	32
Compact Air Hoist / Alpha 2200 Hoist	8	Sky Rig	33
Tower Hoists	9	Roof Rigging Accessories	34
Wire Rope and Accessories	10	Specialty Rigging Products	36
Hoist Accessories	11	Fall Arrest Equipment	38
Sky Stage Ultra (SSU) Standard Platforms	13	Project News	39
Sky Stage Ultra (SSU) Deck	16	Permanent Access Equipment	40
Sky Stage Ultra (SSU) Standard Accessories	18	Powered Platforms	41
Standard SSU and Boiler Accessories	21	Monorail	42
Sky Stage Ultra (SSU) Boiler Platforms	22	Davits	43
Sky Stage Ultra (SSU) Boiler Accessories	24	Roof Anchorages	44
SSU Work Cages	25	Rigging Sleeves	45
Low-Profile and Fold-up Work Cages	26	FlyDeck.....	46
Special Access Baskets, Platforms	27	Technical Documentation.....	49
Custom Work Cage Solutions	28	Safety and Training Services	50
Custom Platform and Work Cage Examples	29	Certification Compliance.....	52

LNx Hoist

The LNx Hoist is Sky Climber's premier hoist for suspended access applications. Its durable design, ease of maintenance, and innovative traction mechanism provides unbeatable value to fleet owners.

SKY CLIMBER HOIST WARRANTY

24-MONTHS FACTORY WARRANTY ON ALL PARTS AND LABOR
36-MONTHS ON GEARTRAIN PARTS AND LABOR



Shown here with optional top limit switch

FEATURES

- Cast Aluminum outer shell
 - Provides strength and durability
 - Keeps moisture and debris out of electrical and mechanical housings
 - Built to withstand the toughest conditions
- Ease of Use
 - Internal over-speed device automatically resets by going in the upward direction
 - Ergonomic design with handles and grips for transport
 - Easy to operate, access, clean and maintain
 - Modular design and construction
 - Few wear parts means less down time
- Solid Sheave Traction Mechanism
 - Grips wire rope for ascent and descent using innovative roller system
 - Gentle on wire rope

COMPONENTS

- Pressure sensitive traction sheave
- Non-Powered control descent
- Voltage meter built in
- Plug-and-play removable electro-box
 - Five quick connect plugs to remove electrobox
- Fold-up stirrup strap for easy storage
- Options:
 - Overload protection
 - Limit switches
 - CSA compliant version available for Canada

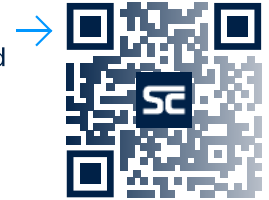
MAINTENANCE

- Annual maintenance takes less than one hour
- Fewer wear parts makes total cost of ownership lower
- Electrical components are easy to access
- Rollers and guide ring easy to inspect and replace



Dual-Line LNX Hoists are available in single and three-phase models, in 1000, 1250, and 1500 lb. capacities.

Explore our new and expanding online Knowledge Base for detailed product data and insights.



LNX SPECIFICATIONS			
Lifting Capacity (Cap)	750, 1000, 1250, 1500, 2000 lbs	Part No.Three Phase	LNX-1000-3PH, LNX-1250-3PH, LNX-1500-3PH
Voltage	208 or 220 Volts	Emergency Stop	Yes
Durable Outer Shell	Cast Aluminum	Non-Powered Control Descent	Yes
Phase	Single and Three	Manual Ascent Handle Attached	Yes
Hertz	60 Hz	Overspeed Indicator	Yes
Internal Secondary Brake	Yes	Self Reeving	Yes
Power	1.9 HP	Stow Away Stirrup	Yes
Worm Gear Box	Yes	Overload Protection	Optional
Amperage	9.0	Solid Sheave Traction Mechanism	Yes
Weight	114 lbs	Central Control Box Capable	Yes
Upper Limit Switch	Optional	Labor Required for Maintenance	< 1 hour
Ultimate Upper Limit Switch	Optional	Wire Rope	5/16" or 8 - 8.4mm
Part No. Single Phase	LNX-1000-208, LNX-1250-208, LNX-1500-208	Voltage Meter	Yes

Compact Electric Hoist

The new gearbox design on our Compact Hoists make them gentler on wire rope.



FEATURES

- New and Improved gearbox is easier to maintain and extends the life of wire rope
- Fits through a small (18") opening for hard to reach places
- All Compact models operate on 5/16" (8.0 to 8.4mm) wire rope
- Hoist control or plug-in pendant ready
- Volt meter

COMPONENTS

- Power indicator light shows power status and emergency stop status
- Includes required Sky Lock III
- Uses planetary gear system, the industry's most efficient gearbox
- Two handles on all hoists for easy loading and maintenance
- New and Improved gear box is interchangeable with air or electric motors

OPTIONS

- Wireless remote control
- Pendants, available in 6 ft - 250 ft lengths
- Three-phase or Single-phase

ELECTRICAL SPECIFICATIONS

	750	1000 & 1250	1500
Lift Capacity	750	1000 & 1250	1500
Power	1.2 HP / kW 0.95	1.2 HP / kW 0.95	1.2 HP / kW 0.95
Amperage	6.5 Amps	7.5 Amps	9.0 Amps
Power Cable	14/3	14/3	14/3
Voltage	110 Vac/60 Hz 1/3 PH	208 or 220 Vac/60 Hz 1/3 PH	208 or 220 Vac/60 Hz 1/3 PH
Hoist Weight	90 lbs*	90 lbs*	90 lbs*
Sky Lock III	Included with hoist	Included with hoist	Included with hoist
Wire Rope	5/16" or 8mm	5/16" or 8mm	5/16" or 8mm
Ascent Speed	32 fpm	32 fpm	32 fpm
Descent Speed	35 fpm	32 fpm	32 fpm
Part No.	KCE-750-110V	KCE-1000-208V, KCE-1250-208V	KCE-1500-208V

*Weight includes Sky Lock

GENERATOR SELECTION GUIDE

Recommended Generator KVA/KW

Qty	Hoist	Voltage	Run Amps	Run KVA/KW	20% added	KVA/KW
2	Compact Series--1 Phase	208/230	18.2	3.79	4.54	5
2	Compact Series--3 Phase	208/230	9.8	3.90	4.68	5
2	LNx Series--1 Phase	208/230	21.6	4.49	5.39	6
2	LNx Series--3 Phase	208/230	11.6	4.62	5.55	6

Compact Air Hoist

Sky Climber's Compact Air Hoist utilizes 20 years of proven technology.

- Fits through a small (18") opening for hard to reach places
- Use of a planetary gear system, the industry's most efficient gearbox
- Pendants available in lengths from 6 ft - 200 ft
- Includes required Sky Lock III
- All porting internal
- GAST air motor offers more reliability than other air motors
- Gear box interchangeable with air or electric motors

PNEUMATIC (AIR) SPECIFICATIONS

Lift Capacity	1000 & 1250
Power	70 CFM
PSI	100
Hoist Weight	96 lbs (Including Sky Lock III)
Ascent Speed	20-35 fpm
Descent Speed	35 fpm
Pendant Control	Available
Wire Rope	5/16"
Part No.	KCA-1000-AIR-G
	KCA-1250-AIR-G

Alpha 2200

Designed with heavier lifting capacity while maintaining Sky Climber's high standard for quality and safety

Most affordable Heavy Duty Hoist on the market

ALPHA 2200 SPECIFICATIONS

Lift Capacity	2200 lbs	Operating Speed	32 fpm
Voltage	220 Volts	Features Sky Lock II	Yes
Phase	Single and Three	Size	16.1in (L) x 15.5in (W)
Weight	165 lbs	Wire Rope	10.2mm
Part No.	KAE-2200-220-3PH	Weight with Sky Log	195 lbs

Included with all Compact Air Hoists:

- Sky Lock III
- Filter and Lubricator
- Bracket

Explore our new and expanding online Knowledge Base for detailed product data and insights.



SKY CLIMBER HOIST WARRANTY

24-MONTHS FACTORY WARRANTY ON ALL PARTS AND LABOR
36-MONTHS ON GEARTRAIN PARTS AND LABOR



Tower Hoists

- Operator / Rider controls the hoist with wireless remote. Rider doesn't have to rely on hand signals or relay person
- Emergency Descent on hoist for lowering during power failure
- 35 fpm travelling speed is safe and OSHA compliant
- Upper limit switch prevents rider from ascending into structure
- Utilizes Rotation-Resistant Wire Rope
- Remote uses Frequency Hopping Spread Spectrum Technology which eliminates the possibility of interference from other signals
- 300 ft wireless remote range
- Easily installs on the crown or base of drilling rig
- Weatherproof enclosures on all parts of hoist and electrical components
- Meets or exceeds OSHA requirements
- Meets MIL-STD-8100 Shock & Vibration Test approval



**Base Mount
Tower Hoist**

Part No.
3590-750-110-B



**Crown Mount
Tower Hoist**

Part No.
3590-750-110-C

Explore our new and expanding online Knowledge Base for detailed product data and insights.



TOWER HOIST SPECIFICATIONS

Lift Capacity	750 lbs	Emergency Stop	Yes
Voltage	110 V	Rope Easily Accessed	Yes
Durable Outer Shell	Steel	Non-Powered Control Descent	Yes
Phase	Single	Manual Ascent Handle Attached	Yes
Hertz	60	Self Reeving	Yes
Motor Type	1.3 HP	Solid Sheave Traction Mechanism	Yes
Gear Box	Planetary	Labor Required for Maintenance	< 4Hour
Amperage	12	Non-Rotating Wire Rope	5/16" or 8mm
Weigh	600 lb	Upper Limit Switch	Included
Travel Speed	35fpm	Crown Mount Part No	3590-750-110C
Base Mount Part No.	3590-750-110B		

Wire Rope & Accessories

We will cut, braise and bullet-tip the rope at no charge when you buy it by the foot.

Swaging available for an additional charge



5 X 26 STEEL WIRE ROPE

5/16", WS RRL, EIPS, Galvanized, PC

Breaking Strength	10500 lbs
5,000 ft Spool Part No	51008306
Wire Rope Length (specify length)	51008306-(Length)
Swage Kit w/ Insulated Thimble	51008306-SI
Swage Kit w/ Standard Steel Thimble	51008306-S



SHACKLE

Size	5/8"
Rating	3 1/4 tons
Weight	2.63 lbs each
Part No.	119-8



FIST GRIP (J-CLAMP)

Size	5/16"
Part No.	119-6



INSULATED THIMBLE ASSY

Size	5/16"
Part No.	119-71



WIRE ROPE & CABLEWINDER

Part No.	123-50
----------	--------



19 X 7 NON ROTATING WIRE ROPE

5/16", RR, XIP, IWRC

Breaking Strength	8600 lbs
Part No	51008306-NR
Custom Length	51008306-NR-(length)



STANDARD STEEL THIMBLE

Size	5/16"
Part No.	119-5
Size	3/8"
Part No.	119-38



INSULATED THIMBLE

Size	5/16"
Insulated	119-77

Hoist Accessories



SKY LOCK III & IV	
Weight	10 lbs
Included with all Compact Hoists	
5/16" or 8mm Wire Rope	
SL III Part No.	56009839-1500
SL IV Part No.	4053-1000



SKY LOCK COVER	
Used on both Sky Lock II & III	
Weight	2 lbs
Type	Part No.
Durable	305-67
Disposable	305-69



SKY LOCK II	
Weight	12 lbs
Included with all Alpha 2200 Hoists	
3/8" or 9.5mm Wire Rope	
Part No.	56009826
Sky Lock HD (use with 10.2mm Wire Rope)	
Part Number	56009826-HD



LNX COVER	
Used on all LNX Hoists	
Weight	3 lbs
Type	Part No.
Durable	44001030
Disposable	44001031



ELECTRIC DROP CORD		
Made of 10/3, reinforced, SOW electric cable, 20 amp, 250 volt twist lock connectors & weather-proof covers. Strain reliefs at ends		
Length	Weight	Part No.
150 ft	40 lbs	127-35-150
250 ft	70 lbs	127-35-250



COMPACT HOIST COVER	
Weight	3 lbs
Type	Part No.
Durable	42008106
Disposable	42008109



DOUBLE SKY LOCK BRACKETS	
Description	Part No.
Standard	J3425
End Stirrup	3905-7001
Low-Pro	3838-0100
Walk Thru	360247

BLOCK STYLE STRAIN RELIEF	
Weight	1.5 lbs
Use for 10/3, 10/4 or 10/5 power cords	
500 lb capacity	
Part No.	4063-3



STEP DOWN TRANSFORMER		
Provides 220V power to hoists and 110V GFCI protected power for hand tools. Built-in circuit breaker, OSHA requires GFCI protected power for 110V hand tools operated on metal platforms.		
Size	Weight	Part No.
3.0 KW (15 amp)	60 lbs	126-277-6



90 DEGREE HOIST MOUNT	
Part No.	360267



Hoist Accessories

*Additional Electrical Cord and Product Assembly Lengths Available



BOOSTER TRANSFORMER

Provides a voltage boost from low voltage power supplies to the hoist

Item: 220V 10% Boost

Weight 22 lbs

Part No. 126-182



CENTRAL CONTROL BOX (CCB)

Allows control of 2, 3, 4, 5, 6, 8 or more hoists by one operator.

Use with Electric

Part No. 126-652-1500

Control leads sold separately



AIR CCB

Description Part No.

2 Hoist 3542-2000

3 Hoist 3542-3000

4 Hoist 3542-4000



COMPACT HOIST BOX

Compact Electric & Air Hoist Box

17.5"W x 21"L x 25"H

Weight 40 lbs

Part No. 800-6

ELECTRIC YOKE ASSEMBLY

Made of 10/3 type SOW electrical cable, 20 amp, 250V twist lock connector



Length Weight Part No.

30 ft 10 lbs 126-60-1

40 ft 12 lbs 126-60-2

50ft 15 lbs 126-60-3

PENDANT CONTROL

For Compact and LNX Hoists

Size Part No.

6 ft 41021752-6

12 ft 41021752-12

18 ft 41021752-18

6 ft - 200 ft Lengths



WIRELESS REMOTE CONTROL SYSTEMS

Range Part No.

300' KCE-CR

1000' KCE-CR-EXT



HOIST VOLT METER

Allows the user to read voltage and amperage of hoist during use.

Weight 2.059 lbs

Part No. 4639-1000



AIR PENDANT

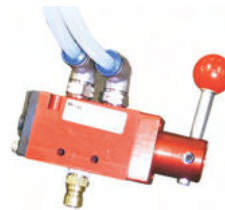
Compact 1000, 1250 Pendant

Available Lengths (len) 24 to 200 ft

Part No. 41021753-(len)

AIR HOSE

Part No. 139-12-(len)



Sky Stage Ultra Standard Platform

FEATURES

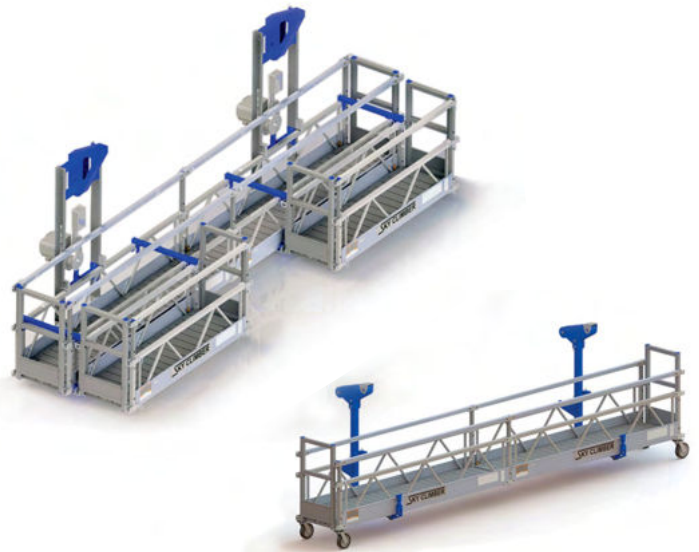
- Load rated up to 2000 lbs
- Dual wire rope capable
- Quick & easy setup requires no tools
- Reinforced, reversible floor panels provide the industry's most stable platform
- Adjustable handrails for more work surface access
- Compatibility with other platforms in the industry increases fleet optimization
- Meets or exceeds OSHA and ANSI standards
- UL Listed (Sa2816)

COMPONENTS

- Movable Low-profile Stirrups
- Horizontal Hinges
- Adjustable and Fixed Corners
- Wide Area Options (Dance Floor and Decks)
- Solid or grated floor available
- Moveable Walk-thru Stirrup
 - Modular design for easy storage, transport, and replacement
 - Lighter weight with wheels for easier movement

VERSATILE AND CONFIGURABLE

- 50 ft (15m) span between suspension points (only 2 hoists)
- 70 ft (21m) length is possible with Walk-thru Stirrups
- Up to 3-meter cantilever with use of movable Walkthru Stirrup
- Multi-tier options with trap door floor
- Folding porch options
- Double wide options
- Double high options for higher load ratings
- Platform cable truss options



INSTRUCTIONS FOR ACTUAL SAFE WORKING LOAD

Sky Stage Ultra (SSU) is a modular platform that combines the best of current technology with new concepts.

SSU platforms are highly configurable and used across a wide variety of industries.

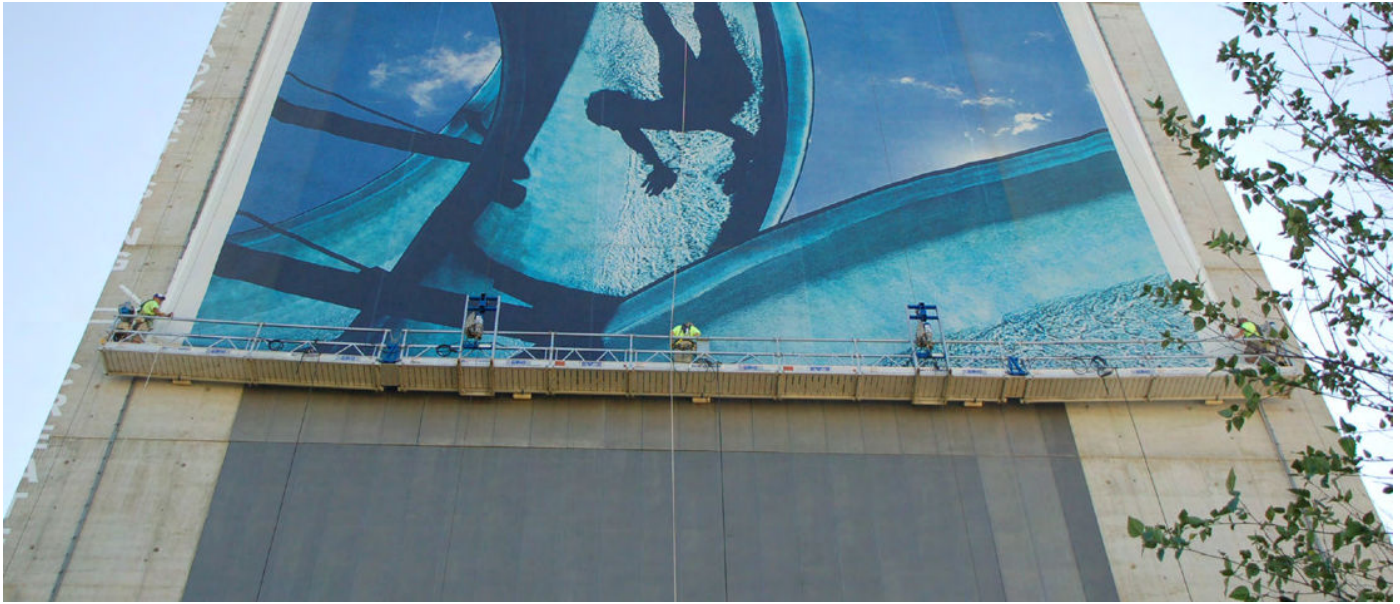
Add working load limit of hoists. Compare working load limit of hoist with max. safe working load of platform. The **LOWEST** rating is the **ACTUAL SAFE WORKING LOAD**.

Read 'Installation Instructions' prior to assembling.

Safe working load only for configurations with end stirrups.

Self-Weight	Suspension Distance	Max. Safe Working Load (uniformly distributed)	
249lbs (113kg)	6'9" (2m)	2000lbs (900kg)	
285lbs (129kg)	9'9" (3m)	2000lbs (900kg)	
363lbs (164kg)	13'6" (4m)	2000lbs (900kg)	
399lbs (181kg)	16'6" (5m)	2000lbs (900kg)	
435lbs (197kg)	19'6" (6m)	2000lbs (900kg)	
512lbs (232kg)	23'3" (7m)	1500lbs (680kg)	
548lbs (249kg)	26'3" (8m)	1500lbs (680kg)	
584lbs (265kg)	29'3" (9m)	1000lbs (450kg)	
662lbs (300kg)	33'0" (10m)	1000lbs (450kg)	
698lbs (316kg)	36'0" (11m)	1000lbs (450kg)	
734lbs (333kg)	39'0" (12m)	1000lbs (450kg)	
811lbs (368kg)	42'9" (13m)	750lbs (340kg)	
847lbs (384kg)	45'9" (14m)	750lbs (340kg)	
883lbs (401kg)	48'9" (15m)	750lbs (340kg)	

* Please contact Sky Climber Rep for additional available configurations including 1.5m, 1m and .5m.



SKY STAGE BY COMPONENT

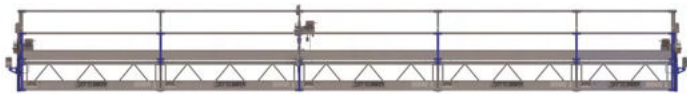
Description	Part No.	2m	3m	4m	5m	6m	7m	8m	9m	10m	11m	12m	13m	14m	15m	
Side Panel - 3 meter	360035	0	2	0	2	4	2	4	6	4	6	8	6	8	10	
Side Panel - 2 meter	360033	2	0	4	2	0	4	2	0	4	2	0	4	2	0	
Side Panel - 1 meter	360031															
Side Panel - 1.5 meter	360032															
Side Panel - .5 meter	360195															
Floor Panel - 3 meter	360043	0	1	0	1	2	1	2	3	2	3	4	3	4	5	
Floor Panel - 2 meter	360042	1	0	2	1	0	2	1	0	2	1	0	2	1	0	
Floor Panel - 1 meter	360040															
Floor Panel - 1.5 meter	360041															
Floor Panel - .5 meter	360193															
Top Rail Assembly - 3 meter	360149	0	2	0	2	4	2	4	6	4	6	8	6	8	10	
Top Rail Assembly - 2 meter	360148	2	0	4	2	0	4	2	0	4	2	0	4	2	0	
Top Rail Assembly - 1 meter	360146															
Top Rail Assembly - 1.5 meter	360147															
Top Rail Assembly - .5 meter	360194															
Connecting Frame	360039	2	2	3	3	3	4	4	4	5	5	5	6	6	6	
Telescoping Post	360054	4	4	6	6	6	8	8	8	10	10	10	12	12	12	
End Stirrup	360150	2	2	2	2	2	2	2	2	2	2	2	2	2	2	
Caster Assembly	360065	4	4	4	4	4	4	4	4	4	4	4	4	4	4	
Wall Roller	360111	2	2	2	2	2	2	2	2	2	2	2	2	2	2	
Lock Pin	360019	16	16	30	30	30	44	44	44	58	58	58	72	72	72	
Moveable Walk-Thru Stirrup	360130															Variable
Moveable Walk-By Low Profile	361030															Variable
Adjustable Corner	360100															Variable
Horizontal Hinge	360105															Variable
End Gate	360140															Variable

* Please contact Sky Climber Rep for additional available configurations including 1.5m, 1m and .5m.

Sky Stage Ultra Deck

The Sky Stage Ultra Deck is a high capacity work platform. Platform size and capacity are easily customizable.

The Sky Stage Ultra Deck uses standard SSU components and can be tailored with sensors, outlets, flooring, scaffolding and other accessories for a versatile and easy-to-use access solution.



ADAPTABILITY:

- Platform size is customizable to fit applications
- Uses standard SSU components
- Load rating is flexible based on number of hoists and tie-off points
- Can include electrical outlets and other accessories
- Central Control Box operates all hoists at the same time
- Anti-tilt, Underload and Overload Sensors available
- Dual-rope system capable
- Attachments for horizontal life lines

ADVANTAGES:

- Less expensive than built-up scaffolding
- Cover large areas with one platform
- Easily move between work areas
- Able to put large number of workers and equipment in one area
- Easy to assemble and disassemble on-site, can save weeks of project time
- Breaks down into small components for easy handling and storage

APPLICATIONS:

Ideal for work on Boilers, Bridges, Off-shore Oil Rigs, Restoration, and many other special applications.



Custom Platform Engineering

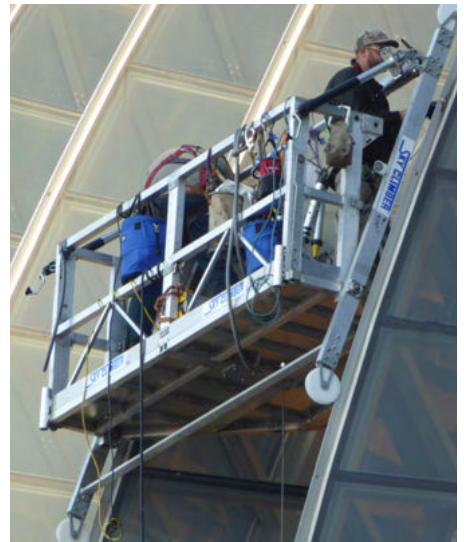
Sky Climber's Engineering, Design, and Manufacturing teams work to provide the safest, most effective platforms available. Our solution-based approach drives us to provide the exact solution you need, when and where you need it.



Bridge Cable Maintenance Platform



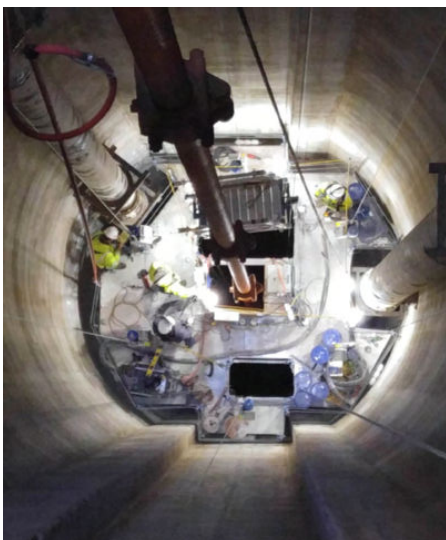
Ad Banner Replacement Platform



Half Barrel Roof Access Platform



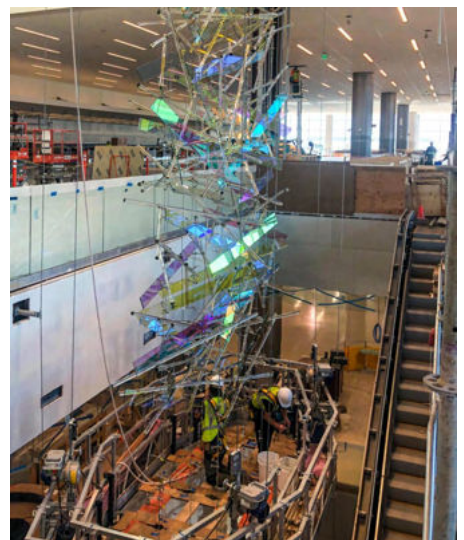
Floating Bridge Maintenance Deck



Dam Shaft Access Platform



Two-Tier Facade Platform



Glass Sculpture Platform

SSU Standard Accessories

FLOOR PANELS



FLOOR PANEL (DECK)

Size	Weight	Part No.
.5m	7 lbs	360193
1m	15 lbs	360040
1.5m	21 lbs	360041
2m	27 lbs	360042
3m	37 lbs	360043



GRATED FLOOR

Size	Weight	Part No.
.5m	7 lbs	361093-G
1m	15 lbs	360040-G
1.5m	21 lbs	360041-G
2m	27 lbs	360042-G
3m	37 lbs	360043-G

SIDE AND RAIL COMPONENTS

SIDE PANEL

Size	Weight	Part No.
.5m	7 lbs	360195
1m	15 lbs	360031
1.5m	21 lbs	360032
2m	27 lbs	360033
3m	37 lbs	360035



TOP RAIL ASSEMBLY

Size	Weight	Part No.
.5m	1.5 lbs	360194
1m	3 lbs	360146
1.5m	4 lbs	360147
2m	5 lbs	360148
3m	7 lbs	360149



HORIZONTAL HINGE

Standard Only

Weight	41 lbs
Part No.	360105



PORCH BRACKET KIT

Includes 2 porch brackets, 2 spacers, and 8 lock pins

Weight	22 lbs
Part No.	3829



TELESCOPING POST

Weight	2 lbs
Part No.	360054



CONNECTING FRAME

Weight	10 lbs
Part No.	360039



SSU Standard Accessories

END GATES



SWINGING END GATES

Weight 18.5 lbs

Outward Swinging Gate

Part No. 360140-1

Inward Swinging Gate

Part No. 3943



END GATE

Weight 15 lbs

Part No. 360140



DUAL SWINGING END GATE

Weight 15 lbs

Part No. 3943-100



PORCH END GATE

Weight 10.5 lbs

Part No. 3829-1000

STIRRUPS



END STIRRUP

Weight 32 lbs

Part No. 360150



DOUBLE WIDE STIRRUP

Weight 80 lbs

Part No. 3762



PIC BOARD STIRRUP

Weight 44 lbs

Part No. 4233-1000



PASS BY STIRRUP

Weight 96 lbs

Part No. 3689-3100



SHORT END STIRRUP

Weight 29.5 lbs

Part No. 4007-200



LOW MOUNT END STIRRUP

Weight 22 lbs

Part No. 3623-3000



MOVEABLE WALK-THRU STIRRUP

Weight 125 lbs

Part No. 360130

Dual Rope Capable



HIGH STABILITY LOW MOUNT END STIRRUP

Weight 34 lbs

Part No. 360220

SSU Standard Accessories

CORNERS



FIXED CORNER

Standard Only, 30°, 45°, 90°

Degree	Part No.	Weight
30°	3604-300	18 lbs
45°	3604-465	26 lbs
90°	3604-900	73 lbs



ADJUSTABLE CORNER

Standard Only, 0° thru 90°

Weight	132 lbs
Part No.	360100

WIRE WINDERS



Standard version shown here. See page 24 for Boiler version.

PASSIVE WIRE WINDER

Weight	40 lbs
Capacity	400'
Part No.	121-1



Control cables (PN 4279-9140-XXM) are sold separately and are available in varying lengths. Standard (0.5, 1, 1.5, 2, 3 meter) and custom lengths available. Call for details.

HIGH-CAPACITY PASSIVE WIRE WINDER

Part No.	4308-1000
Weight	75 pounds
Capacity	750'
Construction	Aluminum

HIGH-CAPACITY POWERED WIRE WINDER KITS

SINGLE-line Kit (PN 4279-1)

Component	Part No.	Quantity
Powered Wire Winder	4279-1000	2
Central Control Box	4279-9101	1
Junction Box	4279-9121	2

DUAL-line Kit (PN 4279-2)

Component	Part No.	Quantity
Powered Wire Winder	4279-2000	2
Central Control Box	4279-9101	1
Junction Box	4279-9121	2



WIRE WINDER MOUNTING BRACKETS

Weight	40 lbs
Capacity	200'
Type	Part No.
SSU/Boiler	3471-3
Low Profile Stirrup	3516-100



PASSIVE WIRE WINDER HANGER

Weight	20 lbs
Part No.	3933-200

Standard SSU and Boiler Accessories

* Please contact Sky Climber for questions related to load capacity



CASTER ASSEMBLY	
Weight	10 lbs
Part No.	360065

LOCK PIN ASSEMBLES	
Steel	360019
Aluminum	360019-AL

EMERGENCY RESPONSE KIT	
Includes Fire Extinguisher, First Aid Kit, and Bodily Fluids Cleanup Kit	
Part No.	4179-315



MOVEABLE WALK-BY LOW PROFILE STIRRUP	
Weight	126 lbs
Part No.	361030

ADJUSTABLE HEIGHT STIRRUP	
Weight	100 lbs
Part No.	3590-5000



WALL ROLLER	
Weight	10 lbs
Part No.	360111



EXTENDABLE WALL ROLLER - STD	
Weight	22 lbs
Part No.	4087-100



EXTENDABLE WALL ROLLER - DLX	
Weight	24 lbs
Part No.	4087-200



TWO POINT ATTACHMENT FOR LOW PROFILE STIRRUP	
Weight	26 lbs
Part No.	361054
Dual Rope Capable	



TOOL BOX	
Weight	15 lbs
Part No.	4068-152
Size	Large

Welding Protection



WELDING GROUND CABLE	
Part No.	53008100



INSULATED THIMBLE ASSY	
Size	5/16"
Part No.	119-71



THIMBLE	
Part No.	119-77










Sky Stage Ultra Boiler Platform

Easy, fast and modular access platforms

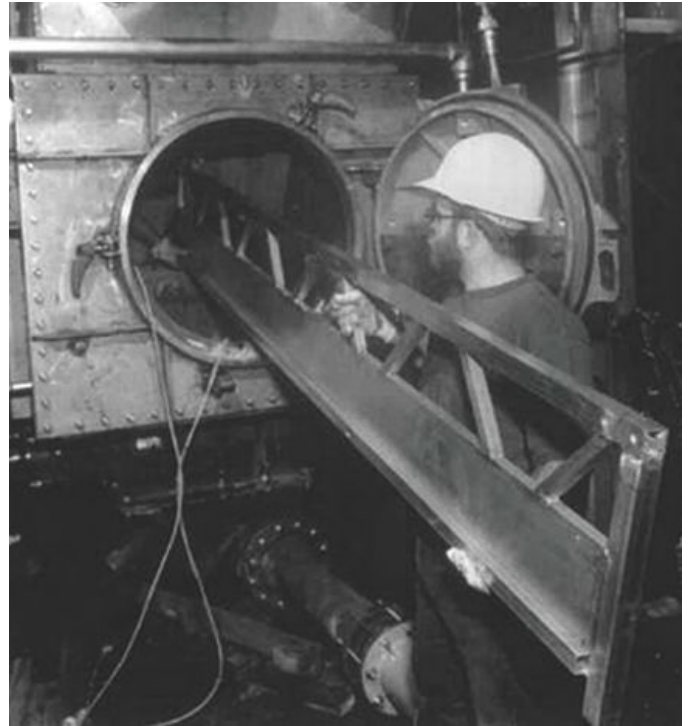
- Folds to fit through openings as small as 18" round
- 1250 lbs load rating from 1m to 6m lengths
- 1000 lbs load rating from 7m to 9m lengths
- Transport a 30 foot platform (or larger) in the bed of your pick up truck
- Use Boiler End gates and movable stirrups for more versatility
- Components unfold to provide full-size platform & performance
- Workers set up a platform in 20 minutes
- Adjustable hand rails add versatility and increase work surface space
- 45 Deg. fixed corners available



Stop paying high labor and erection costs for stack or system scaffolding

Self-Weight	Suspension Distance	Max. Safe Working Load (uniformly distributed)	
175lbs (89kg)	3'9" (1m)	1250lbs (560kgs)	
249lbs (118kg)	6'9" (2m)	1250lbs (560kgs)	
265lbs (129kg)	9'9" (3m)	1250lbs (560kgs)	
363lbs (164kg)	13'6" (4m)	1250lbs (560kgs)	
399lbs (181kg)	16'6" (5m)	1250lbs (560kgs)	
435lbs (197kg)	19'6" (6m)	1250lbs (560kgs)	
512lbs (232kg)	23'3" (7m)	1000lbs (450kgs)	
548lbs (249kg)	26'3" (8m)	1000lbs (450kgs)	
584lbs (265kg)	29'3" (9m)	1000lbs (450kgs)	

* Please contact Sky Climber Rep for additional available configurations including 1.5m, 1m and .5m.



SKY STAGE BOILER BY COMPONENTS

Description	Part No.	2m	3m	4m	5m	6m	7m	8m	9m
Side Panel Boiler - 3 meter	361019	0	2	0	2	4	2	4	6
Side Panel Boiler - 2 meter	361023	2	0	4	2	0	4	2	0
Side Panel Boiler - 1 meter	361027								
Side Panel Boiler - .5 meter	361210								
Floor Panel Boiler - 3 meter	361021	0	1	0	1	2	1	2	3
Floor Panel Boiler - 2 meter	361025	1	0	2	1	0	2	1	0
Floor Panel Boiler - 1 meter	361029								
Floor Panel Boiler - .5 meter	361211								
Top Rail Assembly Boiler - 3 meter	361010	0	2	0	2	4	2	4	6
Top Rail Assembly Boiler - 2 meter	361022	2	0	4	2	0	4	2	0
Top Rail Assembly Boiler - 1 meter	361026								
Top Rail Assembly Boiler - .5 meter	361212								
Connecting Frame Boiler Version	361015	2	2	3	3	3	4	4	4
Telescoping Post Boiler Version	361014	4	4	6	6	6	8	8	8
End Stirrup Boiler Version	361011	2	2	2	2	2	2	2	2
Caster Assembly*	360065	4*	4*	4*	4*	4*	4*	4*	4*
Wall Roller Assembly	360111	2	2	2	2	2	2	2	2
Safety Pin Assembly	360019	16	16	30	30	30	44	44	44
Moveable Walk-By Low Profile Stirrup	361030								Variable
End Gate Boiler Version	361051								Variable
Work Cage - 1 meter	368000-LMW01								
Work Cage - 2 meter	368000-LMW02								

**Optional Item - not included with boiler stages*

* Please contact Sky Climber Rep for additional available configurations including 1.5m, 1m and .5m.

SSU Boiler Accessories



SIDE PANEL		
Size	Weight	Part No.
.5m	8 lbs	361210
1m	15 lbs	361027
1.5m	19.2 lbs	361063
2m	21 lbs	361023
3m	29 lbs	361019



TOP RAIL ASSEMBLY		
Size	Weight	Part No.
.5m	4 lbs	361212
1m	6 lbs	361026
1.5m	8 lbs	361062
2m	10 lbs	361022
3m	15 lbs	361010



FLOOR PANEL		
Size	Weight	Part No.
.5m	9 lbs	361211
1m	20 lbs	361029
1.5m	28.3 lbs	361065
2m	30 lbs	361025
3m	38 lbs	361021



BOILER CONNECTING FRAME	
Weight	10 lbs
Part No.	361015



BOILER TOP RAIL POST	
Weight	2 lbs
Part No.	361014



BOILER END GATE	
Weight	15 lbs
Part No.	361051



BOILER END STIRRUP	
Weight	32 lbs
Part No.	361011



LOW MOUNT BOILER STIRRUP	
Weight	20 lbs
Part No.	3623-1000



BOILER NON POWERED WIRE WINDER	
Weight	40 lbs
Capacity	200'
Part No.	121-1-B



WIRE WINDER MOUNTING BRACKETS	
Weight	40 lbs
Capacity	200'
Type	Part No.
SSU/Boiler	3471-3
Low Profile Stirrup	3516-100

Sky Stage Ultra Work Cage

- Aluminum and Steel construction for a strong, yet light-weight stirrup
- Modular design for easy storage, transport, and replacement of damage components
- Includes wheels, for easier transport

- Top and bottom slated floors
- Floor handles for easy movement
- Solid or grated floor option available
- Dual rope capable

Custom Sizes Available



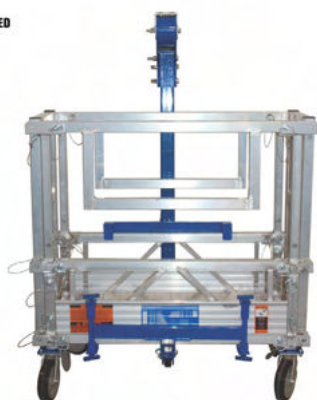
SKY STAGE ULTRA WORK CAGE WITH MOVEABLE WALK-THRU STIRRUP

Size	Load Rating	Weight	Part No.
1m	1250 lbs	253 lbs	369000-W01
1.5m	1250 lbs	316 lbs	369000-W015
2m	1250 lbs	330 lbs	369000-W02



SKY STAGE ULTRA WORK CAGE WITH MOVEABLE WALK-BY LOW PROFILE STIRRUP

Size	Load Rating	Weight	Part No.
1m	1250 lbs	323 lbs	369000-LMW01
1.5m	1250 lbs	355 lbs	369000-LMW15
2m	1250 lbs	378 lbs	369000-LMW02



SSU BOILER WORK CAGE WITH MOVEABLE WALK-BY LOW PROFILE STIRRUP

Size	Load Rating	Weight	Part No.
1m	1250 lbs	299 lbs	368000-LMW01
2m	1250 lbs	365 lbs	368000-LMW02

Low Profile & Fold Up Work Cages



Pictured here with hoist for display purposes only. Hoist not included.

LOW PROFILE KNOCK DOWN (LPKD) WITH EXPANDED METAL FLOORS

Dismantles to fit through 19" round opening	
Load Rating	1000 lbs
Weight	155 lbs
Dimensions	53"h x 37"w x 34.5"d
Part No.	106-203-X
Wall Roller	112-125
Wire Winder Mount and Caster Kit	106-239



LOW PROFILE KNOCK DOWN 2.0

Dismantles to fit through 15" round opening	
Load Rating	850 lbs
Weight	128 lbs
Dimensions	38.75"w x 36.25"d x 52.5"h
Part No.	106-203-2.0
Wall Roller	106-203-2.0-WR



FOLD UP WITH EXPANDED METAL FLOORS

Folds Flat (Umbrella Type). Fits through 21" round opening. Steel	
Load Rating	1000 lbs (500 lbs each side)
Weight	180 lbs
Dimensions	82"h x 70"w x 17.25"d
Part No.	106-196-X

Special Access Baskets, Platforms

BOSUN CHAIR

Compatible with most industry hoists

Extra Back Support

Wheels for easy transport

Weight 39 lbs

Part No. 104-43

Part No. Chair Replacement 104-42

Part No. Front Wheel Only 104-29

Part No. Rear Wheel Only 104-36



FALSE CAR

Compatible with All Sky Climber Hoists and most industry hoists

Weight 758 lbs

Part No. 3850-1000

Depth 47.25" - 86.5"

False Car w/out Canopy PN: 3850-1000

False Car WITH Canopy PN: 3850-2000

- For temporary use in elevator shafts to install rail-systems of permanent elevators.
- System is designed for T-rail sizes: 1-1/4", 1-1/8", 3/4", 5/8", 3/8"
- Wood floor and wood handrails
- Canopy, height extension (51"), and bottom limit trip bar are additional options



ANGEL WING BASKET

Angel wing baskets provide a simple, low cost solution for spot work on steel structures by allowing a worker to hook and clamp the angel wing basket into place on horizontal flanged steel beams.

Durable, lightweight aluminum construction can be easily installed and relocated by one worker

Basket easily folds flat for convenient transport and storage

Provides full toe board, mid rail, and handrail protection

Fits steel beam widths from 5" to 19" and flange thicknesses up to 1.5"

Capacity 500 lbs

Dimensions Weight Part No.

24"x30"x66" 47 lbs 3830-4000

24"x42"x66" 54 lbs 3830-4500

24"x57"x66" 66 lbs 3830-5000



Custom Work Cage Solutions

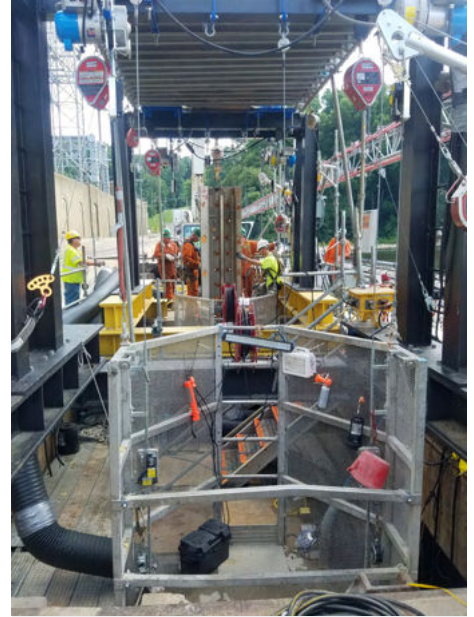
Sky Climber designs and manufactures custom work cages to meet unique and challenging applications. If you have a project that requires a work cage with a special size, shape or capacity, we can help! Contact us at 800-255-4629.



Steel Crane Basket



Work Cage & Retractable Lifelines



Cofferdam Access Platform



Round Aluminum Work Cage



Auto-folding Work Cage



Pier Platform

Custom Platforms and Work Cages



Curved Double-wide Platform



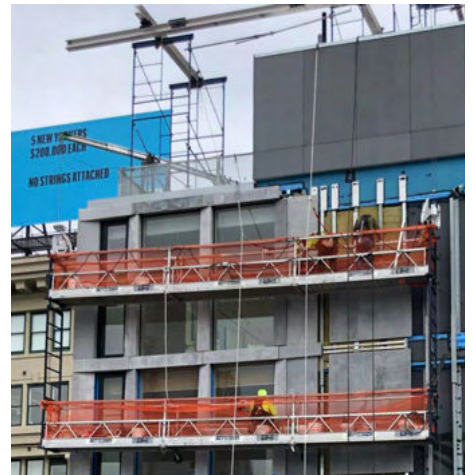
Concrete Shell Roof Access



Counterbalanced Down-and-Under Platform



Shaft Access Platform



Multi-tier Access Platform



Round Steel Work Cage



Rolling SSU Deck under Pedestrian Walkway



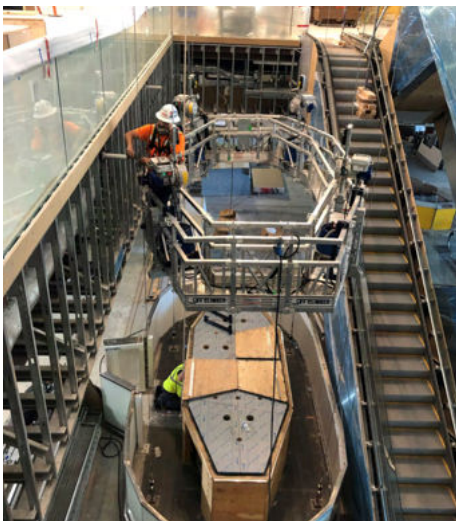
Barge Access System with Powered Trolley

Engineering Services and Solutions

Sky Climber's Engineering, Design, and Manufacturing teams work to provide you the best solution for your project. Our solution-based approach allows us to simplify the process, from design consultation to system commissioning and support.

- Layout and Design
- PE Stamped Drawings
- Standard and Custom Manufacturing
- Installation and Project Management
- Testing and PE Certification

Explore our new and expanding online Knowledge Base for detailed product data and insights.



Glass Sculpture Platform



Splitting Platform



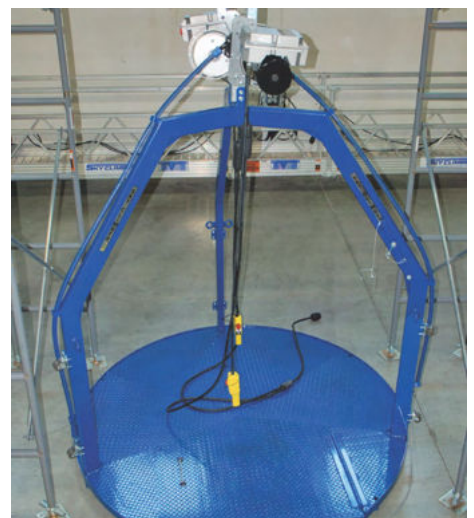
Museum Artifact Maintenance Platform



Boiler Stage with Canopy



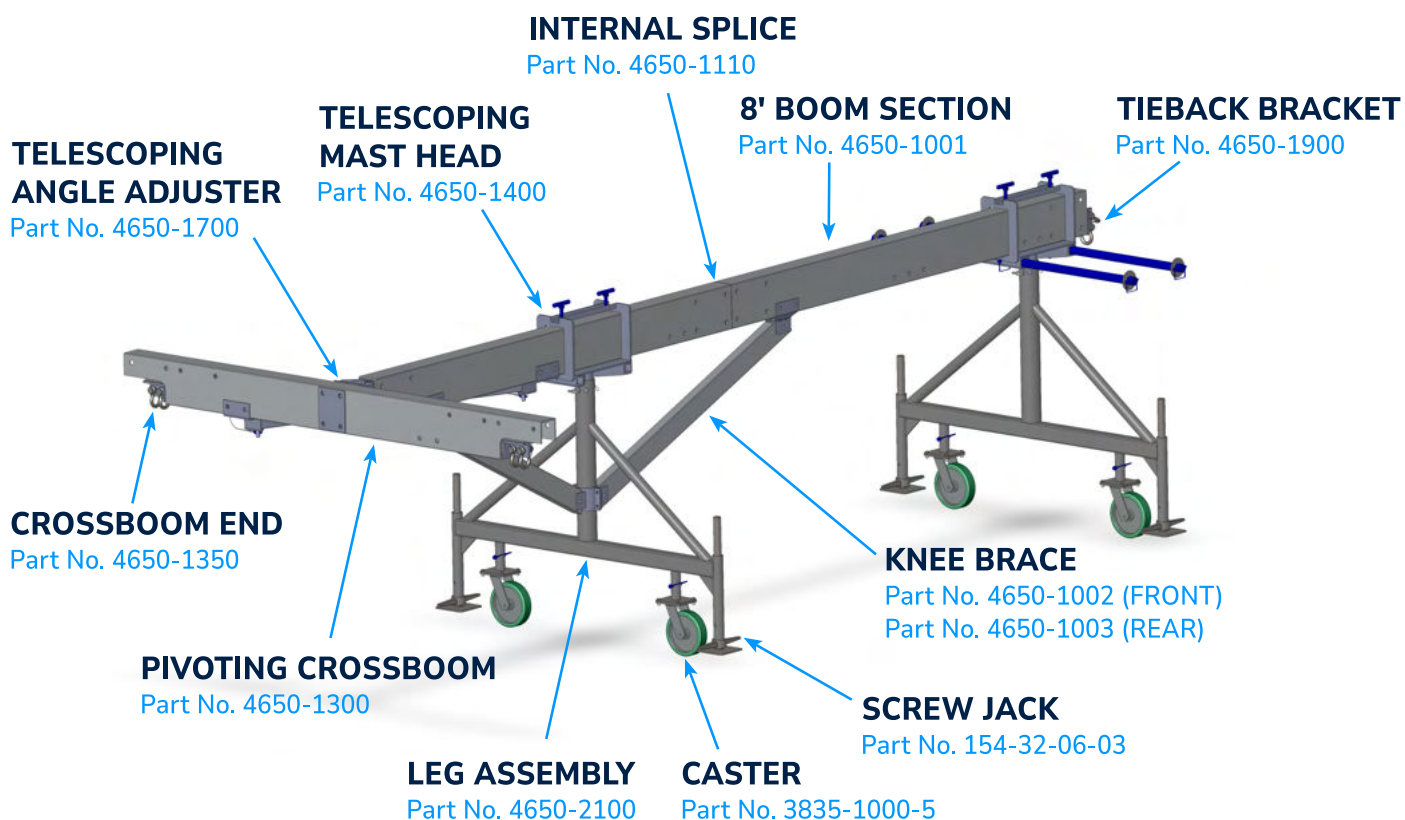
Corner Access Platform



Mining Platform

T-Boom

The T-Boom is a 16 ft long aluminum outrigger designed to support a 2-point suspended platform 2m or 2.5m long. The crossboom pivots to allow use of the platform at multiple angles relative to the main boom.



FEATURES

- 1,000 lb (x2) max hoist capacity
- Designed for both for primary and secondary suspension
- Height adjustable through use of screw jacks and/or mast heads
- Front leg pivots 45° to allow placement close to parapet

T-BOOM SPECIFICATIONS

Hoist Capacity	1,000 lb max (2x)
Max Outreach	5 ft - 6 in
Max Height	6 ft ±
Crossboom Angles	90°, 60°, 45°, 30°
Construction	Steel / Aluminum
Finish	Galvanized / Aluminum

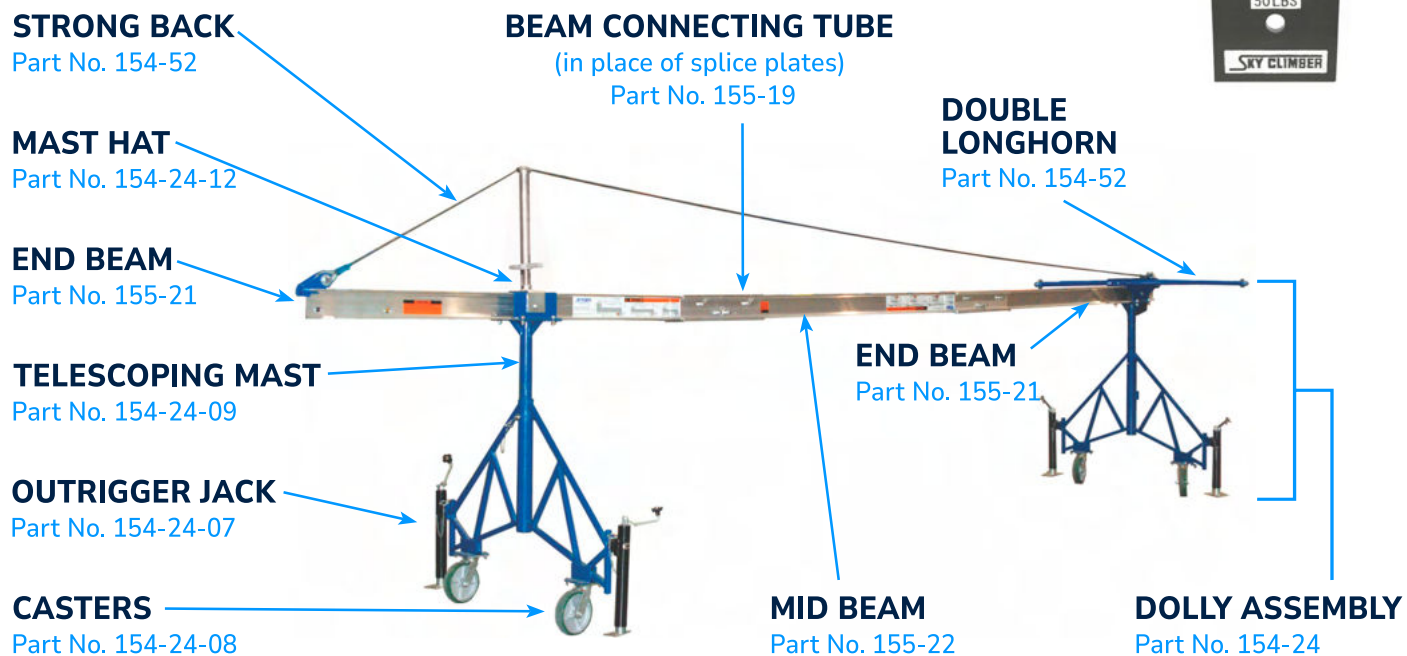
*Consult Sky Climber engineering for detailed counterweight and loading information.

Rolling Roof Rigging

COUNTERWEIGHT

Part No. 154-17

Part No. 154-17-P for painted

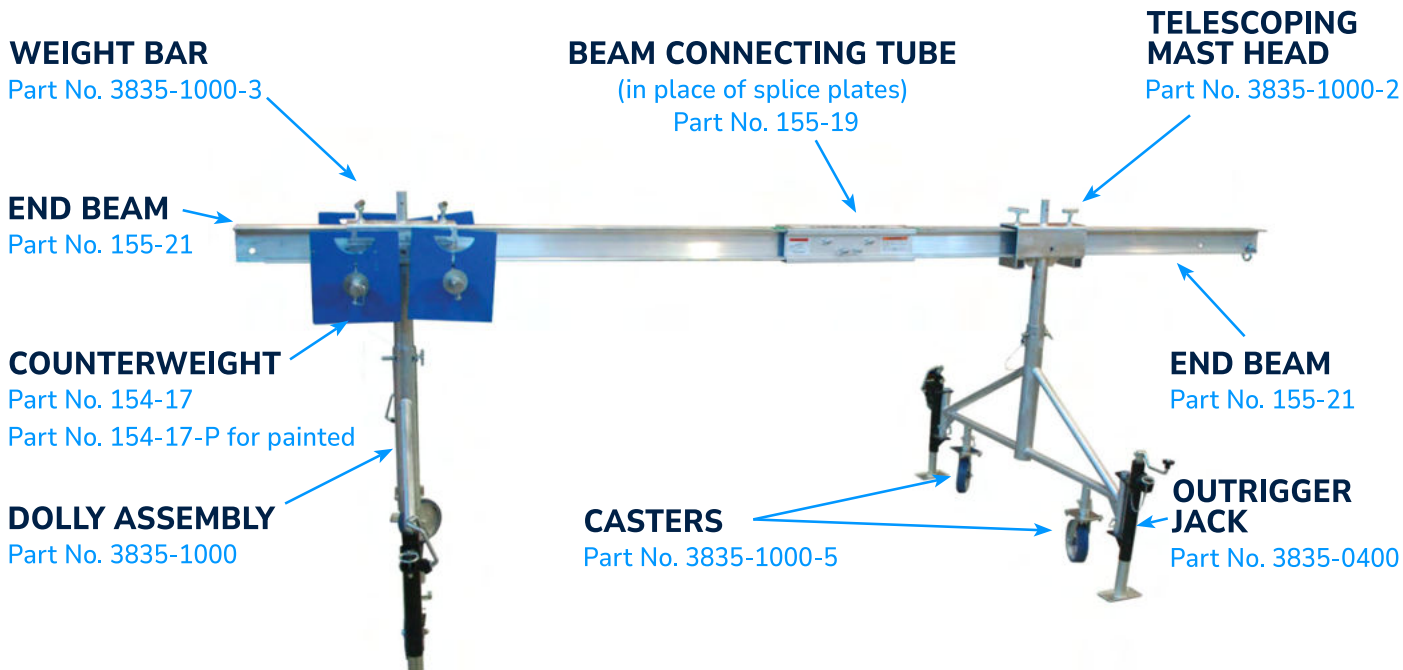


ROLLING ROOF RIG PACKAGES

Part No.	Length	Description
154-24-A	16 ft system	(2) 8 ft beams with all components, splice plates only, except counterweights
154-24-B	24 ft system	(3) 8 ft beams with all components, splice plates only, except counterweights
154-24-C	24 ft system	(3) 8 ft beams with all components, splice plates only, includes strong back - except counterweights
154-24-ABT	16 ft system	(2) 8 ft beams with all components, includes beam connecting tube, except counterweights
154-24-BBT	24 ft system	(3) 8 ft beams with all components, includes beam connecting tubes, except counterweights
154-24-CBT	24 ft system	(3) 8 ft beams with all components, includes beam connecting tubes - strong back assembly, except counterweights
155-16-1	8 ft system	(1) 8 ft mid-beam with splice plates
155-16-1BT	8 ft system	(1) 8 ft mid-beam with beam connecting tube
155-3-2	16 ft system	(2) 8 ft split-beam assembly with splice plates
155-3-2BT	16 ft system	(2) 8 ft split-beam assembly with beam connecting tube
155-21	8 ft system	(1) end-beam with decals
155-22	8 ft system	(1) mid-beam with decals

Sky Rig

100% interchangeable with existing fleets



FEATURES

- Can be set directly onto a scaffold frame
- Kits and Components at prices that make sense
- 100% interchangeable with existing fleets
- No hand tools required for assembly



New: Dolly Packages available

Can be set directly onto a scaffold frame

SKY RIG SPECIFICATIONS

Load Capacity	1500 lbs
Max Outreach	
With Standard	5ft
With 8ft Beam Tube	8 ft
Parapet Clearance	42" to 72"
Construction	Steel/Aluminum
Finish	Galvanized/Aluminum

Kits:

Description	Part No.
8ft Beam Tube Kit	3835-DBT
16 ft Rolling Roof Rig	3835-ABT
24 ft Rolling Roof Rig	3835-BBT
24 ft RRR w/ Strongback	3835-CBT
Dolly Assembly	3835-1000

SKY RIG DOLLY ASSEMBLY 3835-1000

Included components

Description	Part No.	Quantity
Jack	3835-0400	2
Frame	3835-1000-1	1
Mast Head Assembly*	3835-1000-2	1
Weight bar (longhorn)	3835-0300	1
Caster assembly	3835-1000-5	2
Washers	107-684	2
Pins	3788-42	3

*Standard-sized Mast Head Assembly accommodates standard beams. To fit an 8' Beam Tube, order the Large Mast Head Assembly, Part Number 3835-1000-4.

Roof Rigging Accessories



CORNICE HOOK

Size	Weight	Part No.
9 in	21 lbs	149-5
14 in	38 lbs	149-6
18 in	41 lbs	149-24
22 in	54 lbs	149-7



BEAM STAND

Weight	56.2 lbs
Part No.	3950-1500



RING GIRDER ROLLER

1000 lbs Capacity	
Upper Portion 5" min	
Weight	25 lbs
Part No.	154-10



SLAB EDGE CLAMP

Load Rating	1250 lbs
Weight	97 lbs
Part No.	4023-2000



STRONG BACK ASSEMBLY

New design works on Rolling Roof Rig AND Sky Rig models.	
Weight	25 lbs
Part No.	154-52
Length Reduction Kit (for 16-ft conversion)	154-26-16



OUTRIGGER JACK

Weight	10 lbs
Part No.	154-24-07



FULLY ADJUSTABLE PARAPET CLAMP

Outreach 16", 20", and 24" from wall. 6 to 32" wall opening

Rated at 1500 lbs	
Weight	25 lbs
Part No.	154-45-20



STAND OFF

Used with Cornice Hook	
Weight	9 lbs
Part No.	119-25



EDGE ROLLER

Repositions workers away from roof's edge

Prevents rope from becoming dangerously frayed. Extends life of lifelines, electrical cords & wire ropes	
Prevents parapet wall damage	
Weight	5 lbs
Part No.	720001



PENTHOUSE CLAMP

5 ft Outreach	25 lbs
Complete assembly with Beam	PN: 4108-4
Clamp Assemblies only (no beam)	PN: 4108-3
Hoist Load	Max Outreach
1000 lbs	36 in
1250 lbs	28 in
1500 lbs	24 in



OUTRIGGER JACK

Weight	12.4 lbs
Part No.	3835-0400

Roof Rigging Accessories



TROLLEY SPLICE PLATE KIT

Weight	33 lbs
Part No.	155-45



SPLICE PLATE

Nut Part No.	107-337(8)
Screw Part No.	107-935(8)
Part No.	155-5



8FT END BEAM

Weight	52 lbs
Part No.	155-21



RIGGING COLLAR

Weight	15 lbs
Place anywhere on the 5x5 rigging beam for an adjustable suspension or tie back options	
Part No.	154-33



MID BEAM

Weight	52 lbs
Part No.	155-22



C STYLE RIGGING COLLAR

Weight	10 lbs
Custom made to fit specific structural beams	
Part No.	3910-100



DOUBLE LONGHORN

Weight	50 lbs
Part No.	154-25



BEAM CONNECTING TUBE

Weight	25 lbs
Eliminates nuts & bolts. Beam connector cuts rigging time by 60%	
2' Part No.	155-19
3' Part No.	155-30
8' Part No.	155-28

TANK TOP ROLLER

Weight	45 lbs
Part No.	154-3



BEAM SADDLE

For flat positioning of beam on roof, parapet or other flat surface; used with beams	
Weight	30 lbs
Part No.	154-28



BEAM TUBE TOP HAT

Oversized top hat fits 8' beam tube on Rolling Roof Rig	
Weight	10 lbs
Part No.	155-29-1



STEEL COUNTERWEIGHT

Weight	50 lbs
Part No.	154-17
Part No.	154-17-P for painted



Specialty Rigging Products



ADJUSTABLE HEADER BEAM KIT

Part No. 3566

KIT INCLUDES:

Header Beam (2x) 3566-1

Beam Clamp (2x) 3566-2

Beam Header Mount (4x) 3566-3

Counterweight Mounting Kit (1x) 3566-4

Latch Pin (2x) 361172

COUNTERWEIGHT MOUNTING KIT INCLUDES:

Longhorn Connector 3566-41

Turnbuckle 3566-42

MOUNTING KIT DOES NOT INCLUDE:

Longhorn 154-25

Rigging Collar 154-33

Shackle 119-8

Counterweight 154-17

Wire Rope 51008306-CUT

SIMPLE HEADER BEAM



24" Part No. 3566-2000

36" Part No. 3566-2001

60" Part No. 3566-2002

Tie Down Clamp 4218-2000

PIGEON HOLE STANDS



Capacity 1500 lbs

Powder Coated Steel 12"x12"x13 1/4"

Weight 30 lbs

Single PN: 154-34

Dual PN: 3589-1000

COUNTERWEIGHT CART



Load Capacity 2000 lbs

Part No. 4352-1000

RIGGING TRIPOD



Weight 22.5 lbs

Part No. 4543-1000

ADJUSTABLE RESCUE TRIPOD



Capacity 1500 lbs

Folding Legs

Weight 55 lbs

Part No. 3693-1000

New Tripod designs available online



DOWN AND UNDER

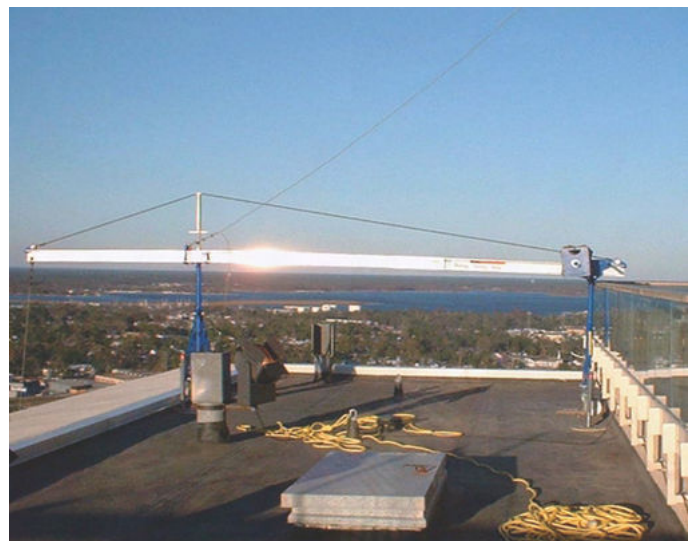
Reach - Down	60-96 inches
Reach - Under	24-48 inches
Max Hoist Capacity	1500 lbs
Weight	115 lbs
Heaviest Piece	40 lbs
Part No.	3453-10

CORNER ADAPTER

Reduces outreach by moving fulcrum closer to parapet	
Reduces quantity of counterweights	
Can eliminate need for a cable-truss/strongback usage	
Allows for better platform position; fits flush against parapet corner	
Compatible with all current model Sky Climber Rolling Roof Rigs with no product modifications	
Maintains height adjustment of beam; no tools required for assembly	
Part No.	154-32
Weight	60 lbs
For Sky Rig Frames - Part No	3835-0150

Rolling Roof Rigging and its accessories save you time and money. The Rigging Collar, Corner Adapter and 8' Beam Connecting Tube will easily integrate with your current equipment. No upgrades, changes or rework required.

Telescoping mast enables you to raise the beam up over a 5 foot parapet wall. Strong back assembly also available for 16-foot rolling roof rig systems. Obtain 6-foot outreach with 1250 lbs capacity hoist.



**Some products may have changed. Contact Customer Support*

Fall Arrest Equipment



LIFELINE TERMINATION PLATE

Part No.	01300
----------	-------



LIFELINE, BULK

Size	Spool Size	Part No.
5/8"	600 ft	310170
5/8"	1200 ft	310171
3/4"	600 ft	310172
3/4"	1200 ft	310173



VERTICAL LIFELINE ASSEMBLY

Length	Part No.
50 ft	01320
75 ft	01323
100 ft	01324
130 ft	01325
150 ft	01327
200 ft	01326



TOGGLE LOK ANCHORAGE

Part No.	310272
----------	--------



REINFORCED LEATHER GLOVES

Size	Part No.
Medium	310266
Large	310267
Extra Large	310268



6 FT RETRACTABLE LIFELINE

Type	Part No.
Single	01228
Double	01229



CONSTRUCTION HARNESS W/ TONGUE BUCKLE LEG STRAPS & WAIST STRAP

Size	Part No.
Small	193130
Medium - XL	193131
XXL	193132



REMOVABLE ANCHORS

3/4" Portable Concrete	
Part No.	310270
1" Portable Concrete	
Part No.	310271

**Some products may have changed. Contact Customer Support*

Fall Arrest Equipment



TANK LIFELINE ROLLER	
Weight	13.7 lbs
Part No.	4653-1000



LIFELINE PROTECTOR	
Part No.	119-94



ADJUSTABLE BEAM CLAMP			
10,000 lb rating	P/N 146-52	420 WLL	
5000 lb rating	P/N 146-53	310 WLL	



BEAM TROLLEY	
Support Weight	5000 lbs
Part No.	146-105 310 WLL



LIFELINE LANYARDS	
Length	Part No.
3' Lanyard	01226
6' Lanyard	01227

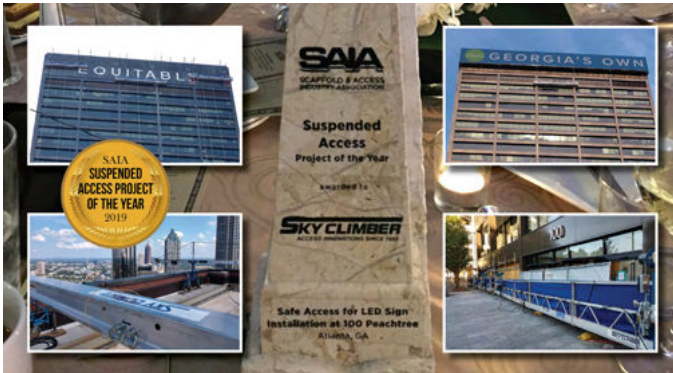
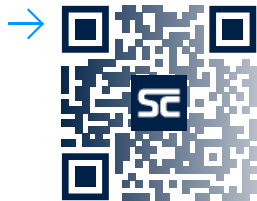


MEGA SWIVELS	
10K Anchorage for concrete and steel	310273
Replacement Bolt Kit for Concrete	310273-1

Project News

Get the latest information on Sky Climber project stories, product announcements and company news on our Blog. Or you can get this all delivered to your inbox by signing up for our newsletter. Don't miss out – we offer special sales for Sky Climber Dealers too.

Explore our new and expanding online Knowledge Base for detailed product data and insights.

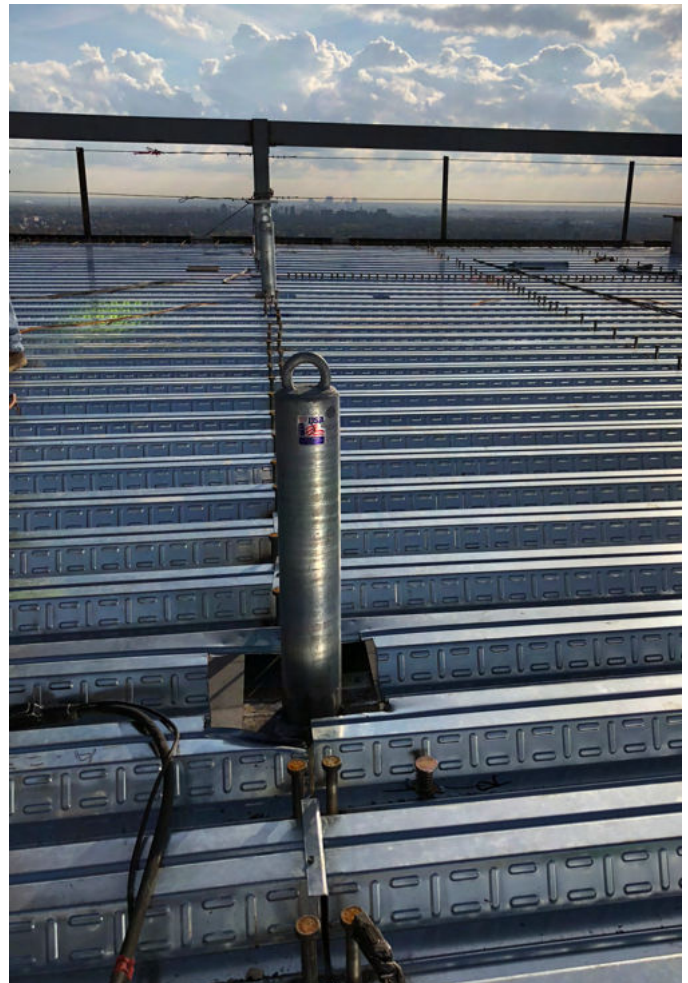
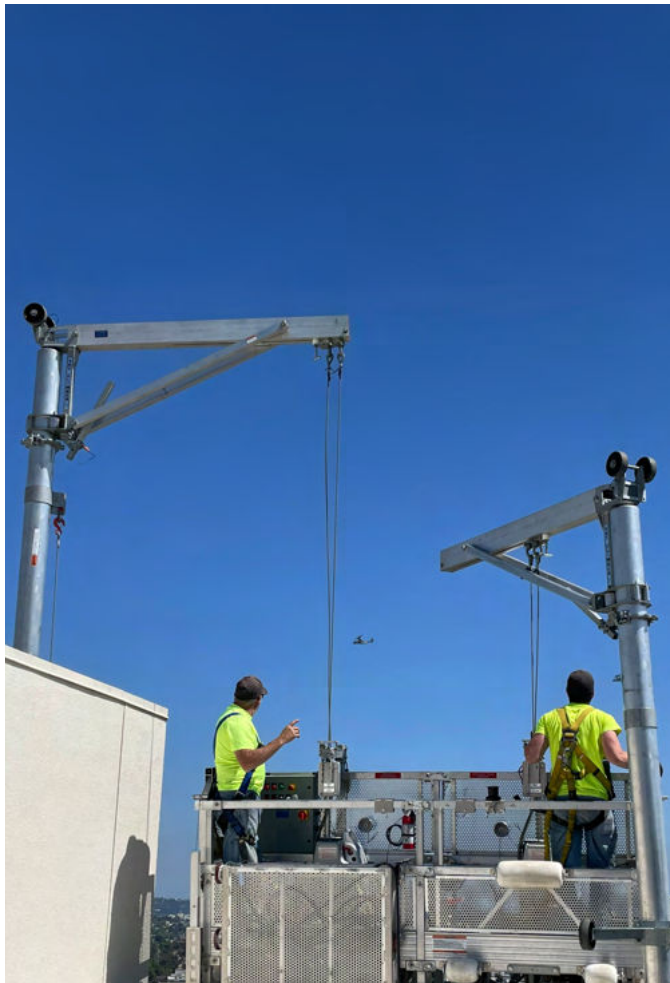


Permanent Access Equipment

Sky Climber® is the most comprehensive provider of powered access and related safety solutions in the industry. Since 1955, **Sky Climber®** has been serving customers with a variety of permanently installed products from powered platforms and roof machines to davits and sockets and monorail systems.

Sky Climber offers a full line of Permanent Access products, including:

- Roof and Wall Anchors
- Davits
- Fixed Outriggers
- Portable Outriggers
- Rigging Sleeves
- Powered Platforms
- Building Maintenance Units (BMUs)
- Monorail Systems



Powered Platforms

Sky Climber Engineered Platforms for Permanent Installations have been newly redesigned with a modular concept. Users will enjoy the features of our original platforms plus the benefits of this new standardized design with:

- Greater compatibility with standard equipment;
- Faster production times from our USA factory; and
- Better availability of replacement and repair parts.

This platform comes in several configurations with optional accessories such as mullion guides, extendable ends, and extendable wall rollers available.

- Ideal for new construction and retrofits
- Highly customizable with 2-line or 4-line systems, multiple power source options, wall rollers and façade stabilization types and more.

3M SSU
3M SSU-DATASHEET



Description

- Sky Stage Ultra (SSU) is a modular platform that combines the best of current technology with new concepts.
- SSU Platforms are highly configurable and used across a wide variety of industries.

Information

- 3 Meter Sky Stage Ultra (SSU) configuration.
- Stage load capacity is determined once full stage is built, including all hoists and additional accessories.

ISO generated drawing, Do not manually update.

First angle projection

Scale: 1:50



ITEM NO.	PART NUMBER	DESCRIPTION	QTY.
1	360035	Side Panel - 3 Meter	2
2	360043	Floor Panel - 3 Meter	1
3	360039	Connection Frame Weldment	2
4	360149	Top Rail Assembly - 3 Meter	2
5	360054	Telescoping Post Weldment	4
6	360019	Lock Pin Assembly	16

INFORMATION	3M SSU-DATASHEET
Dimensions	117.687"x28.671"x42.894" (LxWxH)
Material	Aluminum
Weight	177.5 lbs

The information contained in this drawing is the sole property of Sky Climber. Any reproduction in part or whole without the written permission of Sky Climber is prohibited.
© 2026 Sky Climber, LLC. All rights reserved. Specifications subject to change without notice.

Sky Climber, LLC | 1600 Pittsburgh Drive Delaware, OH 43015
info@skyclimber.com | 800.255.4629 | www.skyclimber.com
1 of 1 | Revision 1 | 04-21-2026



Monorail

Monorails are often the practical solution for access to the underside of a structure. From overhangs to atriums, Monorail Systems provide complete access for rope descent or powered platform applications.

- Internal and External tracks
- Side or top-mount brackets
- Radius curves
- Switches and turntables
- Manual Driven, Rope Driven, and Motor Driven trolleys available
- Full USA-Standard design/engineering packages available

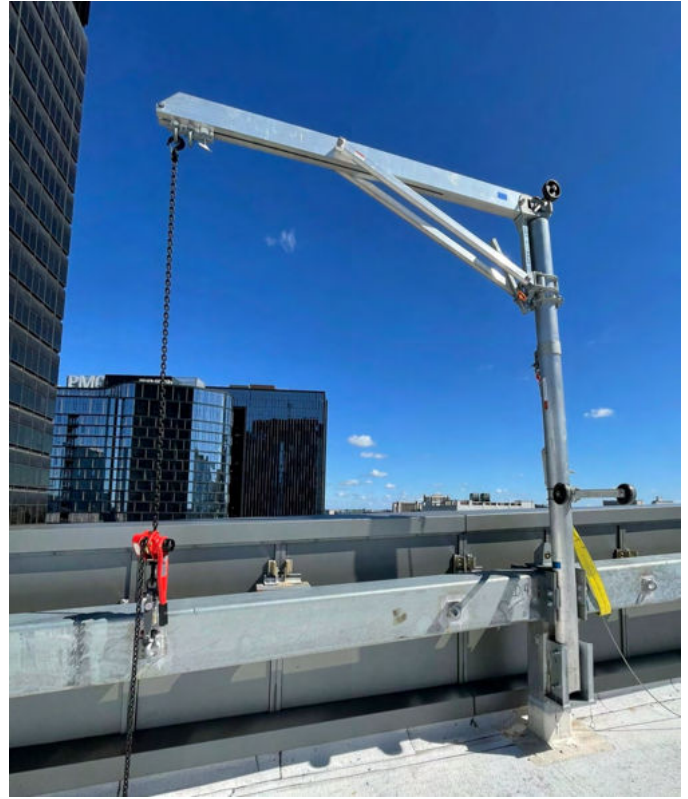


Davits

- Manufactured in USA
- New installations or replacement/ additional quantities
- Sky Climber can match or retrofit most existing sockets with our Custom Socket Program
- Full line of davit arms and attachments
 - For both powered platform and RDS applications
 - 2-line & 4-line systems
 - Flexible reach & capacities
 - Ground & roof launch models
 - Fixed, mobile, and flush/ recessed sockets



GROUND-LAUNCHED DAVIT

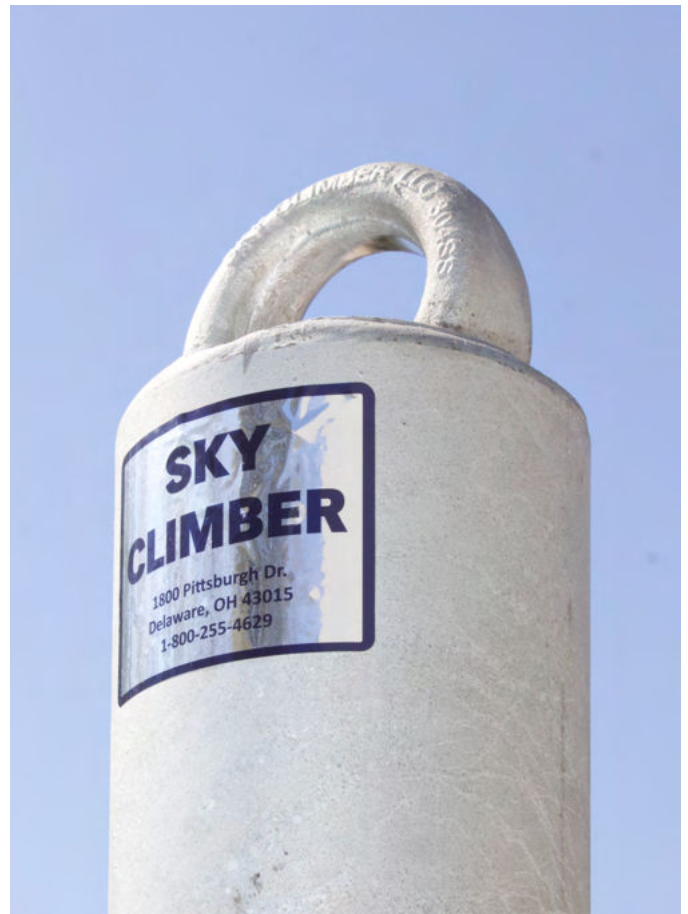


Roof Anchors

Sky Climber offers a full line of Tieback Anchors for Rope Descent and Powered Platform applications. Our anchorage products are manufactured in our US facility by certified welders, with full engineering data packages and support by our own staff of Professional Engineers.

Our anchors are California / 2015 IBC compliant and are available in a variety of sizes and mounting styles. Custom fabrication is also available. Call us today for details.

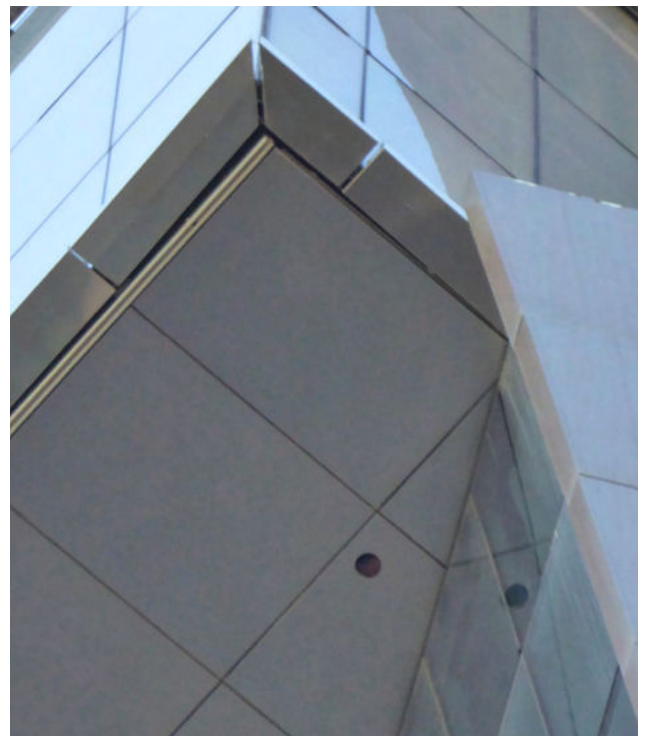
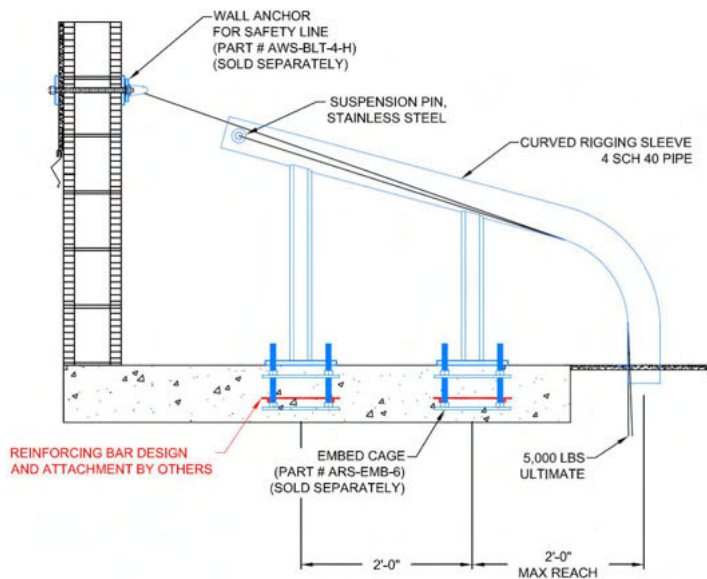
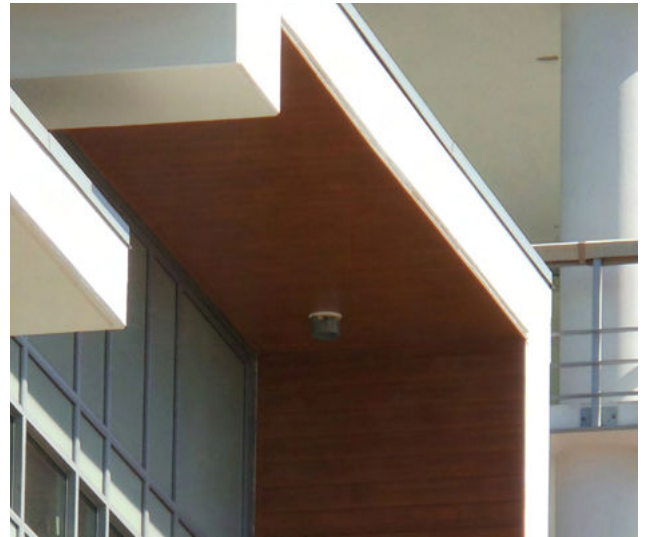
- All models are stronger than the common 5,000 lbs specification
- Simple compliance for most municipalities
- Stainless Steel eyes are standard, with lower cost (but stronger) High Strength Galvanized eyes available
- Our large manufacturing capacity means shorter lead times on large and custom orders
- Layout/Drafting/Testing and PE Services available throughout the US and Canada



Rigging Sleeves

Rigging Sleeves allow rigging to negotiate overhangs, balconies, attics, and other rooftop obstructions.

- Direct Suspension and/or Redirection of suspension ropes and safety lines.
- For RDS and Powered Platform use
- Design/Build of Custom Sleeves
- Reduce Visual Impact



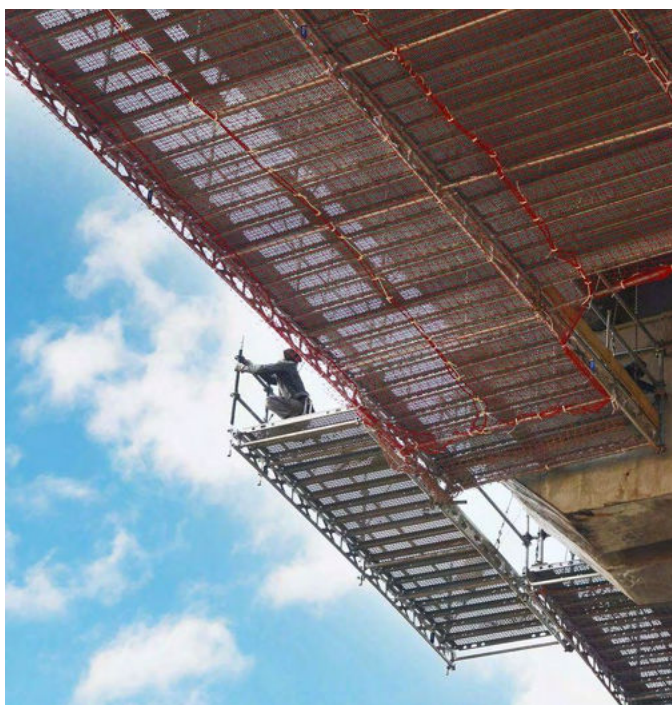
FlyDeck Intro

FlyDeck™ is a cutting-edge suspended platform system designed to simplify and accelerate work in hard-to-reach areas.

Engineered for maximum safety and efficiency, it creates a perfectly horizontal working surface beneath structures such as bridges, viaducts, and ceilings—without interfering with operations above or below.

With its modular design and innovative FlyRail™ guidance system, FlyDeck™ enables fast installation, reduced labor effort, and uninterrupted workflows—even in complex environments.

FLYDECK
SUSPENDED SYSTEM SOLUTION



Sky Climber is the exclusive North American distributor of FlyDeck™ and FlyRail™ by Pilosio.

Key Components and Specs

CORE COMPONENTS

- Aluminum or steel lattice beams (25 cm or 45 cm) for lightweight handling and high load capacity
- FlyRail™ guide system for safe, progressive installation and obstacle bypassing
- Quick-connect system (spigots + spring pins) for fast and secure assembly
- Modular deck configuration, compatible with different scaffolding systems

KEY ADVANTAGES

- 30–50% faster installation vs traditional systems
- No need to stop traffic or operations
- Reduced transport, storage, and labor effort
- Continuous safe working platform during assembly

TECHNICAL SPECIFICATIONS

- Load capacity:
 - up to 150 kg/m² (tie-rods every 6 m²)
 - up to 300 kg/m² (tie-rods every 4 m²)
- Beam lengths: from 1 m to 6 m
- Installation productivity: up to 200 m²/day with 3 operators
- Assembly direction: longitudinal or transverse

**50% Faster.
100% Smarter.**
Streamline Your Workflow.



Sky Climber is the exclusive North American distributor of FlyDeck™ and FlyRail™ by Pilosio.

Variety of Application Examples

FlyDeck is designed for a wide range of complex access scenarios where traditional scaffolding is impractical:

INFRASTRUCTURE

- Bridge and viaduct inspection & repair
- Over-water and elevated structure maintenance
- Edge beams and pier access

TUNNELS & UNDERGROUND

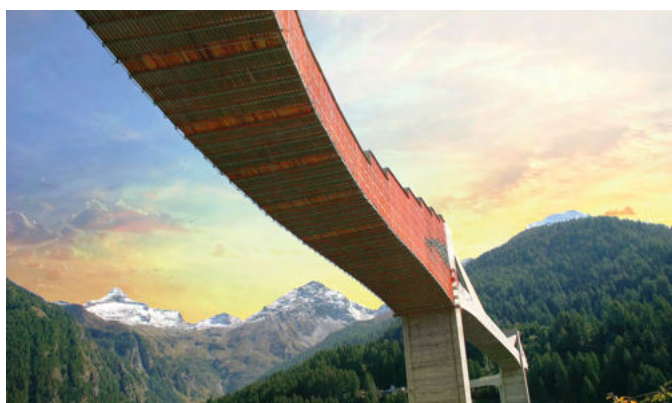
- Tunnel lining installation and maintenance
- Ceiling works in confined environments

CONSTRUCTION & RESTORATION

- Residential and industrial building projects
- Renovation and restoration works
- Complex geometries and irregular structures

INDUSTRIAL APPLICATIONS

- Overhead maintenance in factories and plants
- Access to large-span structures



Contact Us About FlyDeck

Ready to transform your access strategy?

Discover how FlyDeck can reduce installation time, improve safety, and optimize costs on your next project.

Let's build smarter, faster, and safer—with FlyDeck™.

Contact our team today to request:

- A technical consultation
- Project-specific configuration
- Live demo or presentation

Toll free: 0800.255.4629

E-mail: info@skyclimber.com

SAFETY • SERVICE • SOLUTIONS

Safety & Training

Sky Climber leads the way in technological product advancements through research and development. Sky Climber continues to lead the industry with training programs through hands-on presentations, video, and online resources - and we are an authorized SAIA Competent Person Training provider.

At Sky Climber, we pride ourselves in providing the highest quality products, services and support, backed by the industry's best warranty.



SAFETY • SERVICE • SOLUTIONS

Training Customers Since 1980 at Our Facility or Yours

Having well-trained and knowledgeable associates is critical when using and repairing suspended scaffolding equipment. Sky Climber offers a full array of training programs to meet your product, application and safety requirements. Training can be conducted at our training center or at your facility. Contact us to schedule a training class that meets the needs of your organization.

One, Two, Three and Four Day Courses Available:

- **Safety, Operator and Application Training** - including theory, hands-on instruction, demonstrations, and top side rigging.
- **Service and Repair Training** - to learn technical aspects of hoist inspections, troubleshooting, repair and service. Use factory established methods to certify and recertify your equipment, and hands-on bench instruction.
- **Custom Training Courses** - customized to meet your needs: Interpreters are available. Discuss requirements with your instructor.

Sky Climber is The Industry Leader in Access Solutions. We have designed, manufactured and marketed suspended access systems used in industrial, commercial construction and maintenance applications since 1955. Sky Climber provides sales and service to customers in North, Central and South America. In 1969, Sky Climber established its European facility in Belgium to provide products and services to Europe and other parts of the world. We offer training solutions that help you every day as you learn from instructors with 60+ years of industry experience

All Sky Climber, LLC manufactured equipment meets or exceeds OSHA and ANSI requirements.

Contact Us

If you have any questions about training or would like to book training for your organizations, please contact Sky Climber® at **740-203-3931** or send an email to **info@skyclimber.com**.

Visit us online!

Explore our new and expanding online Knowledge Base for detailed product data and insights.



Certification Compliance

Suspended scaffold products used within the United States and its territories are required to comply with the regulations set forth by the United States Occupational Safety and Health Administration (Federal OSHA). These regulations are contained in CFR 1926.451 & 1926.452 Safety and Health Regulations for Construction, and CFR 1910 Occupational Safety and Health Standards – Walking-Working Surfaces. These regulations require suspended scaffold systems and their components be certified by an independent third party to a nationally recognized standard such as Underwriter’s Laboratory (UL) and its UL1322 Standard for Safety for Fabricated Scaffold Planks and Stages, and UL1323 Scaffold Hoists.

Sky Climber, LLC manufactured and supplied products comply with these requirements set forth by Federal OSHA and UL. We also develop our products to comply with the applicable standards promulgated by the American National Standards Institute (ANSI) and other standards writing bodies that pertain to our industry and/or products.

In particular, our hoists, modular work platforms, and portable rigging equipment comply with the following regulations and standards.

HOISTS:

- American National Standard ANSI/UL 1323 – Scaffold Hoists
 - *Sky Climber hoists are UL classified – File no. SA2861*
- American National Standard ANSI/ASSE A10.8 – Scaffolding Safety Requirements
- OSHA 1926.451 & 1966.452 – Scaffolds – General Requirements

WORK PLATFORMS:

- American National Standard ANSI/UL 1322 – Fabricated Scaffold Planks and Stages
 - *SSU platforms are UL classified – File no. SA2861*
- American National Standard ANSI/ASSE A10.8 – Scaffolding Safety Requirements
- OSHA 1910.28 – Safety Requirements for Scaffolding
- OSHA 1926.451 – Scaffolds – General Requirements
- OSHA 1926.452 – Scaffolds – Additional Requirements
- OSHA 1910 – Walking-working Surfaces

PORTABLE RIGGING DEVICES:

- American National Standard ANSI A10.8 – Scaffolding Safety Requirements
- OSHA 1910.28 – Safety Requirements for Scaffolding
- OSHA 1926.451 – Scaffolds – General Requirements
- OSHA 1926.452 – Scaffolds – Additional Requirements

Our rigging products and suspended platform components are designed for at least the 4:1 Factor of Safety required by most if not all of these regulations and standards.

Sky Climber, LLC is committed to providing suspended access equipment which is designed first and foremost for safety and compliance with applicable standards and government regulations. If you have questions or need more information pertaining to the safety and/or compliance of any of our products, please let us know.

Index

About Sky Climber..... 2

LNx Hoist 5

Compact Electric Hoist 7

Compact Air Hoist / Alpha 2200 Hoist 8

Tower Hoists 9

Wire Rope and Accessories 10

Hoist Accessories 11

Sky Stage Ultra (SSU) Standard Platforms 13

Sky Stage Ultra (SSU) Deck 16

Sky Stage Ultra (SSU) Standard Accessories 18

Standard SSU and Boiler Accessories 21

Sky Stage Ultra (SSU) Boiler Platforms 22

Sky Stage Ultra (SSU) Boiler Accessories 24

SSU Work Cages 25

Low-Profile and Fold-up Work Cages 26

Special Access Baskets, Platforms 27

Custom Work Cage Solutions 28

Custom Platform and Work Cage Examples 29

Engineering Services and Solutions 30

T-Boom 31

Rolling Roof Rigging 32

Sky Rig 33

Roof Rigging Accessories 34

Specialty Rigging Products 36

Fall Arrest Equipment 38

Project News 39

Permanent Access Equipment 40

Powered Platforms 41

Monorail 42

Davits 43

Roof Anchorages 44

Rigging Sleeves 45

FlyDeck..... 46

Technical Documentation..... 49

Safety and Training Services 50

Certification Compliance..... 52

Access Innovations Since 1955

SKY CLIMBER®

1600 Pittsburgh Drive Delaware, OH 43015 USA

Phone: 740.203.3900

Toll Free: 800.255.4629

Email: Info@skyclimber.com

Copyright © 2026 Sky Climber, LLC. All Rights Reserved.