



*6th Edition*

# Product Catalog

**ELEVATING SAFETY AND  
INNOVATION WORLDWIDE.**

Welcome to our comprehensive product catalog, showcasing the pinnacle of suspended access equipment solutions designed and manufactured by Sky Climber®



[www.skyclimber.com](http://www.skyclimber.com)



## About Sky Climber

Sky Climber is your dependable source for industry leading powered suspended access solutions. As a globally recognized manufacturer and distributor since 1955, we take pride in our vertical integration—designing and crafting our own equipment. This grants you a seamless experience with high-quality products and services. Our international reach is fortified by facilities and operations in the United States, Belgium, and China.

Our clients trust us for our robust portfolio of suspended access products. Our focus is tailored to your unique requirements, managed by adept local teams. We boast an extensive assortment and huge inventory of equipment, coupled with a comprehensive array of commercial and industrial support services. Unmatched safety standards, operational excellence, project management prowess, and cutting-edge engineering and information systems are the cornerstones of Sky Climber.

At Sky Climber, we deeply value the trust our clients place in us. Through continuous investment in our operations, we deliver products and services that set the standard for reliability. Our commitment to quality and innovation has made us a trusted partner to some of the world's leading companies.

Our commitment to excellence is evident in:

- *The production of tens of thousands of Sky Climber hoists*
- *Next day shipment from our vast inventory of stocked equipment and parts.*
- *Global operation centers*
- *A formidable force of highly skilled and accountable support personnel*
- *Round-the-clock technical support*
- *Factory-trained and certified staff*
- *Engineering expertise recognized worldwide*
- *A dedicated risk management department*
- *Meticulously detailed inspection and service protocols*

Sky Climber's global presence, vast inventory, skilled workforce, and unwavering commitment to service excellence are a guarantee of unparalleled reliability.

So, what does this signify for you? As a valued client of Sky Climber, be it longstanding or new, our aim is to enhance your operational efficiency through:

- *Maximizing operational time*
- *Boosting productivity*
- *Minimizing total cost of ownership*
- *Ensuring the safest operations for your work force*

Get in touch with Sky Climber for your next access challenge—and share the experience by referring a colleague. Discover firsthand why industry leaders trust Sky Climber for excellence in access solutions.





## Multi-Industry Solutions

Sky Climber delivers unmatched proficiency in all temporary & permanent powered access applications. Our prowess extends to skyscrapers, industrial infrastructures including bridges, water towers, offshore oil rigs, wind turbines, dams, power stations, nuclear facilities, and an extensive array of other vital structural sites. Sky Climber is the go-to provider for safe and efficient maintenance solutions for an eclectic range of structures.



## Fall Protection Solutions

Safety is paramount in work-at-height business and is woven into the fabric of our daily operations. For over 70 years, Sky Climber has been the pillar on which contractors have relied for solutions that are not only safe but also profitable. Sky Climber boasts a comprehensive array of fall protection solutions, which have undergone meticulous testing and certification, meeting and exceeding the stringent standards set by OSHA and ANSI.



## Training Solutions

Day in and day out, a plethora of companies utilize Sky Climber products to access their work areas. We are consistently proactive in addressing our clients' needs by offering an array of training courses to assist them in adhering to jobsite, local, state, federal, and provincial regulations. Sky Climber has honed the skills of thousands of operators and supervisors through our Competent Person Training Programs, which are specially tailored for the commercial building sector, as well as through a distinct program exclusively designed for industrial clientele.



## International Coverage

Beyond our facilities in the U.S., Sky Climber's solutions are accessible globally through our locations in Belgium, China, and across growing network of Authorized Dealers.

We distribute suspended scaffolding equipment to more than 70 countries around the world.

# Table of Contents

About Sky Climber..... 2

LNx Hoist ..... 5

Compact Electric Hoist ..... 7

Compact Air Hoist / Alpha 2200 Hoist ..... 8

Tower Hoists ..... 9

Wire Rope and Accessories ..... 10

Hoist Accessories ..... 11

Sky Stage Ultra (SSU) Standard Platforms ..... 13

Sky Stage Ultra (SSU) Deck ..... 16

Sky Stage Ultra (SSU) Standard Accessories ..... 18

SSU Accessories for Standard AND Boiler Platforms ..... 21

Sky Stage Ultra (SSU) Boiler Platforms ..... 22

Sky Stage Ultra (SSU) Boiler Accessories ..... 24

SSU Work Cages ..... 25

Low-Profile and Fold-up Work Cages ..... 26

Special Access Baskets, Platforms, Bosun Chair ..... 27

Custom Work Cage Solutions ..... 28

Custom Platform and Work Cage Examples ..... 29

Engineering Services and Solutions ..... 30

Rolling Roof Rigging ..... 31

Sky Rig ..... 32

Roof Rigging Accessories ..... 33

Specialty Rigging Products ..... 35

SkyMaster ..... 37

Single Mast Transport System ..... 39

Fall Arrest Equipment ..... 40

Permanent Access Solutions ..... 41

Powered and PI Platforms ..... 42

Monorail ..... 43

Davits ..... 44

Roof Anchorages ..... 45

Rigging Sleeves ..... 46

Technical Documentation..... 47

Safety and Training Services ..... 48

Certification Compliance..... 50



## LNx Hoist

The LNX Hoist is Sky Climber's premier hoist for suspended access applications. Its durable design, ease of maintenance, and innovative traction mechanism provides unbeatable value to fleet owners.

### SKY CLIMBER HOIST WARRANTY

24-MONTHS FACTORY WARRANTY ON ALL PARTS AND LABOR  
36-MONTHS ON GEARTRAIN PARTS AND LABOR



*Shown here with optional top limit switch*

### FEATURES

- Cast Aluminum outer shell
  - Provides strength and durability
  - Keeps moisture and debris out of electrical and mechanical housings
  - Built to withstand the toughest conditions
- Ease of Use
  - Internal over-speed device automatically resets by going in the upward direction
  - Ergonomic design with handles and grips for transport
  - Easy to operate, access, clean and maintain
  - Modular design and construction
  - Few wear parts means less down time
- Solid Sheave Traction Mechanism
  - Grips wire rope for ascent and descent using innovative roller system
  - Gentle on wire rope

### COMPONENTS

- Pressure sensitive traction sheave
- Non-Powered control descent
- Voltage meter built in
- Plug-and-play removable electro-box
  - Five quick connect plugs to remove electrobox
- Fold-up stirrup strap for easy storage
- Options:
  - Overload protection
  - Limit switches
  - CSA compliant version available for Canada

### MAINTENANCE

- Annual maintenance takes less than one hour
- Fewer wear parts makes total cost of ownership lower
- Electrical components are easy to access
- Rollers and guide ring easy to inspect and replace



Dual-Line LNX Hoists are available in single and threephase models, in 1000, 1250, and 1500 lb. capacities.

Scan this code with your smartphone to view the LNX Hoist User Manual.

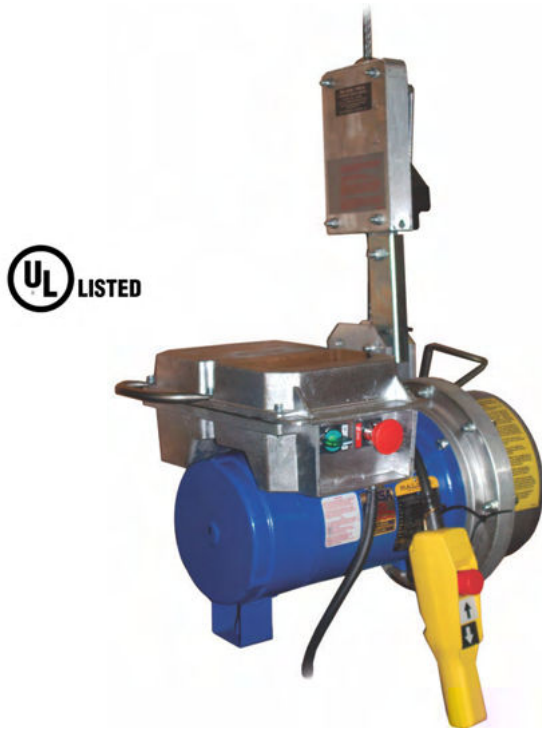


LNX SPECIFICATIONS			
Lifting Capacity (Cap)	750, 1000, 1250, 1500, 2000 lbs	Part No. Three Phase	LNX-1000-3PH, LNX-1250-3PH, LNX-1500-3PH
Voltage	208 or 220 Volts	Emergency Stop	Yes
Durable Outer Shell	Cast Aluminium	Non-Powered Control Descent	Yes
Phase	Single and Three	Manual Ascent Handle Attached	Yes
Hertz	60 Hz	Overspeed Indicator	Yes
Internal Secondary Brake	Yes	Self Reeving	Yes
Power	1.9 HP	Stow Away Stirrup	Yes
Worm Gear Box	Yes	Overload Protection	Optional
Amperage	9.0	Solid Sheave Traction Mechanism	Yes
Weight	114 lbs	Central Control Box Capable	Yes
Upper Limit Switch	Optional	Labor Required for Maintenance	< 1 hour
Ultimate Upper Limit Switch	Optional	Wire Rope	5/16" or 8 - 8.4mm
Part No. Single Phase	LNX-1000-208, LNX-1250-208, LNX-1500-208	Voltage Meter	Yes

# Compact Electric Hoist

The new gearbox design on our Compact Hoists make them gentler on wire rope.

*\*Upgrade to Sky Lock IV*



## FEATURES

- New and Improved gearbox is easier to maintain and extends the life of wire rope
- Fits through a small (18") opening for hard to reach places
- All Compact models operate on 5/16" (8.0 to 8.4mm) wire rope
- Hoist control or plug-in pendant ready
- Volt meter

## COMPONENTS

- Power indicator light shows power status and emergency stop status
- Includes required Sky Lock III
- Uses planetary gear system, the industry's most efficient gearbox
- Two handles on all hoists for easy loading and maintenance
- New and Improved gear box is interchangeable with air or electric motors

## OPTIONS

- Wireless remotecontrol
- Pendants, available in 6 ft - 250 ft lengths
- 3 Phase or Single Phase

## ELECTRICAL SPECIFICATIONS

Lift Capacity	750	1000 & 1250	1500
Power	1.2 HP / kW 0.95	1.2 HP / kW 0.95	1.2 HP / kW 0.95
Amperage	6.5 Amps	7.5 Amps	9.0 Amps
Power Cable	14/3	14/3	14/3
Voltage	110 Vac/60 Hz 1/3 PH	208 or 220 Vac/60 Hz 1/3 PH	208 or 220 Vac/60 Hz 1/3 PH
Hoist Weight	90 lbs*	90 lbs*	90 lbs*
Sky Lock III	Included with hoist	Included with hoist	Included with hoist
Wire Rope	5/16" or 8mm	5/16" or 8mm	5/16" or 8mm
Ascent Speed	32 fpm	32 fpm	32 fpm
Descent Speed	35 fpm	32 fpm	32 fpm
Part No.	KCE-750-110V	KCE-1000-208V, KCE-1250-208V	KCE-1500-208V

*\*Weight includes Sky Lock*

## GENERATOR SELECTION GUIDE

Recommended Generator KVA/KW

Qty	Hoist	Voltage	Run Amps	Run KVA/KW	20% added	KVA/KW
2	Compact Series--1 Phase	208/230	18.2	3.79	4.54	5
2	Compact Series--3 Phase	208/230	9.8	3.90	4.68	5
2	LNx Series--1 Phase	208/230	21.6	4.49	5.39	6
2	LNx Series--3 Phase	208/230	11.6	4.62	5.55	6



## Compact Air Hoist

Sky Climber's Compact Air Hoist utilizes 20 years of proven technology.

- Fits through a small (18") opening for hard to reach places
- Use of a planetary gear system, the industry's most efficient gearbox
- Pendants available in lengths from 6 ft - 200 ft
- Includes required Sky Lock III
- All porting internal
- GAST air motor offers more reliability than other air motors
- Gear box interchangeable with air or electric motors

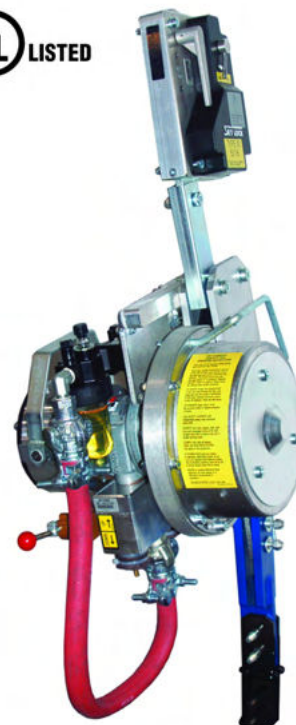
### PNEUMATIC (AIR) SPECIFICATIONS

Lift Capacity	1000 & 1250
Power	70 CFM
PSI	100
Hoist Weight	96 lbs (Including Sky Lock III)
Ascent Speed	20-35 fpm
Descent Speed	35 fpm
Pendant Control	Available
Wire Rope	5/16"
Part No.	KCA-1000-AIR-G
	KCA-1250-AIR-G

Included with all Compact Air Hoists:

- Sky Lock III
- Filter and Lubricator
- Bracket

Scan this code with your smartphone to view the Compact Hoist User Manual.



### SKY CLIMBER HOIST WARRANTY

24-MONTHS FACTORY WARRANTY ON ALL PARTS AND LABOR  
36-MONTHS ON GEARTRAIN PARTS AND LABOR

## Alpha 2200

Designed with heavier lifting capacity while maintaining Sky Climber's high standard for quality and safety

Most affordable Heavy Duty Hoist on the market



### ALPHA 2200 SPECIFICATIONS

Lift Capacity	2200 lbs	Operating Speed	32 fpm
Voltage	220 Volts	Features Sky Lock II	Yes
Phase	Single and Three	Size	16.1in (L) x 15.5in (W)
Weight	165 lbs	Wire Rope	10.2mm
Part No.	KAE-2200-220-3PH		

# Tower Hoists

- Operator / Rider controls the hoist with wireless remote. Rider doesn't have to rely on hand signals or relay person
- Emergency Descent on hoist for lowering during power failure
- 35 fpm travelling speed is safe and OSHA compliant
- Upper limit switch prevents rider from ascending into structure
- Utilizes Rotation-Resistant Wire Rope
- Remote uses Frequency Hopping Spread Spectrum Technology which eliminates the possibility of interference from other signals
- 300 ft wireless remote range
- Easily installs on the crown or base of drilling rig
- Weatherproof enclosures on all parts of hoist and electrical components
- Meets or exceeds OSHA requirements
- Meets MIL-STD-8100 Shock & Vibration Test approval



**Base Mount  
Tower Hoist**

Part No.  
3590-750-110-B



**Crown Mount  
Tower Hoist**

Part No.  
3590-750-110-C

Scan this codewith your  
smartphone to view the  
Tower Hoist User Manual.



## TOWER HOIST SPECIFICATIONS

<b>Lift Capacity</b>	750 lbs	<b>Emergency Stop</b>	Yes
<b>Voltage</b>	110 V	<b>Rope Easily Accessed</b>	Yes
<b>Durable Outer Shell</b>	Steel	<b>Non-Powered Control Descent</b>	Yes
<b>Phase</b>	Single	<b>Manual Ascent Handle Attached</b>	Yes
<b>Hertz</b>	60	<b>Self Reeving</b>	Yes
<b>Motor Type</b>	1.3 HP	<b>Solid Sheave Traction Mechanism</b>	Yes
<b>Gear Box</b>	Planetary	<b>Labor Required for Maintenance</b>	< 4Hour
<b>Amperage</b>	12	<b>Non-Rotating Wire Rope</b>	5/16" or 8mm
<b>Weigh</b>	600 lb	<b>Upper Limit Switch</b>	Included
<b>Travel Speed</b>	35fpm	<b>Crown Mount Part No</b>	3590-750-110C
<b>Base Mount Part No.</b>	3590-750-110B		

# Wire Rope & Accessories

We will cut, braise and bullet-tip the rope at no charge when you buy it by the foot.

Swaging available for an additional charge

## 5 X 26 STEEL WIRE ROPE

5/16", WS RRL, EIPS, Galvanized, PC

Breaking Strength 10500 lbs

5,000 ft Spool Part No 51008306

Wire Rope Length (specify length) 51008306-(Length)

Swage Kit w/ Insulated Thimble 51008306-SI

Swage Kit w/ Standard Steel Thimble 51008306-S



## SHACKLE

Size 5/8"

Rating 3 1/4 tons

Weight 2.63 lbs each

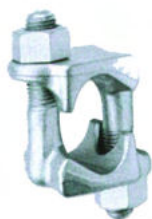
Part No. 119-8



## FIST GRIP (J-CLAMP)

Size 5/16"

Part No. 119-6



## INSULATED THIMBLE ASSY

Size 5/16"

Part No. 119-71



## WIRE ROPE & CABLEWINDER

Part No. 123-50



## 19 X 7 NON ROTATING WIRE ROPE

5/16", RR, XIP, IWRC

Breaking Strength 8600 lbs

Part No 51008306-NR

Custom Length 51008306-NR-(length)



## STANDARD STEEL THIMBLE

Size 5/16"

Part No. 119-5

Size 3/8"

Part No. 119-38



## INSULATED THIMBLE

Size 5/16"

Insulated 119-77





# Hoist Accessories



## SKY LOCK III & IV

Weight 10 lbs

Included with all Compact Hoists

5/16" or 8mm Wire Rope

SL III Part No. 56009839-1500

SL IV Part No. 4053-1000



## SKY LOCK COVER

Used on both Sky Lock II & III

Weight 2 lbs

Type Part No.

Durable 305-67

Disposable 305-69



## SKY LOCK II

Weight 12 lbs

Included with all Alpha 2200 Hoists

3/8" or 9.5mm Wire Rope

Part No. 56009826

Sky Lock HD  
(use with 10.2mm Wire Rope)

Part Number 56009826-HD



## LNx COVER

Used on all LNx Hoists

Weight 3 lbs

Type Part No.

Durable 44001030

Disposable 44001031



## ELECTRIC DROP CORD

Made of 10/3, reinforced, SOW electric cable, 20 amp, 250 volt twist lock connectors & weather-proof covers.  
Strain reliefs at ends

Length	Weight	Part No.
150 ft	40 lbs	127-35-150
250 ft	70 lbs	127-35-250



## COMPACT HOIST COVER

Weight 3 lbs

Type Part No.

Durable 42008106

Disposable 42008109



## BLOCK STYLE STRAIN RELIEF

Weight 1.5 lbs

Use for 10/3, 10/4 or 10/5 power cords

500 lb capacity

Part No. 4063-3



## DOUBLE SKY LOCK BRACKETS

Description	Part No.
Standard	J3425
End Stirrup	3905-7001
Low-Pro	3838-0100
Walk Thru	360247



## STEP DOWN TRANSFORMER

Provides 220V power to hoists and 110V GFCI protected power for hand tools. Built-in circuit breaker, OSHA requires GFCI protected power for 110V hand tools operated on metal platforms.

Size	Weight	Part No.
3.0 KW (15 amp)	60 lbs	126-277-6



## 90 DEGREE HOIST MOUNT

Part No. 360267

# Hoist Accessories

*\*Additional Electrical Cord and Product Assembly Lengths Available*



## BOOSTER TRANSFORMER

Provides a voltage boost from low voltage power supplies to the hoist

**Item:** 220V 10% Boost

**Weight** 22 lbs

**Part No.** 126-182



## CENTRAL CONTROL BOX (CCB)

Allows control of 2, 3, 4, 5, 6, 8 or more hoists by one operator.

**Use with Electric**

**Part No.** 126-652-1500

**Control leads sold separately**



## AIR CCB

**Description** Part No.

**2 Hoist** 3542-2000

**3 Hoist** 3542-3000

**4 Hoist** 3542-4000



## COMPACT HOIST BOX

Compact Electric & Air Hoist Box

**17.5"W x 21"L x 25"H**

**Weight** 40 lbs

**Part No.** 800-6



## ELECTRIC YOKE ASSEMBLY

Made of 10/3 type SOW electrical cable, 20 amp, 250V twist lock connector

Length	Weight	Part No.
30 ft	10 lbs	126-60-1
40 ft	12 lbs	126-60-2
50ft	15 lbs	126-60-3



## PENDANT CONTROL

For Compact and LNX Hoists

Size	Part No.
6 ft	41021752-6
12 ft	41021752-12
18 ft	41021752-18

**6 ft - 200 ft Lengths**

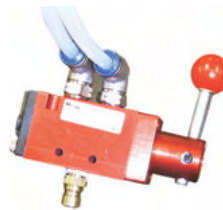


## WIRELESS REMOTE CONTROL SYSTEMS

**Range** Part No.

**300'** KCE-CR

**1000'** KCE-CR-EXT



## AIR PENDANT

Compact 1000, 1250 Pendant

**Available Lengths (len)** 24 to 200 ft

**Part No.** 41021753-(len)

**AIR HOSE**

**Part No.** 139-12-(len)

# Sky Stage Ultra Standard Platform

## FEATURES

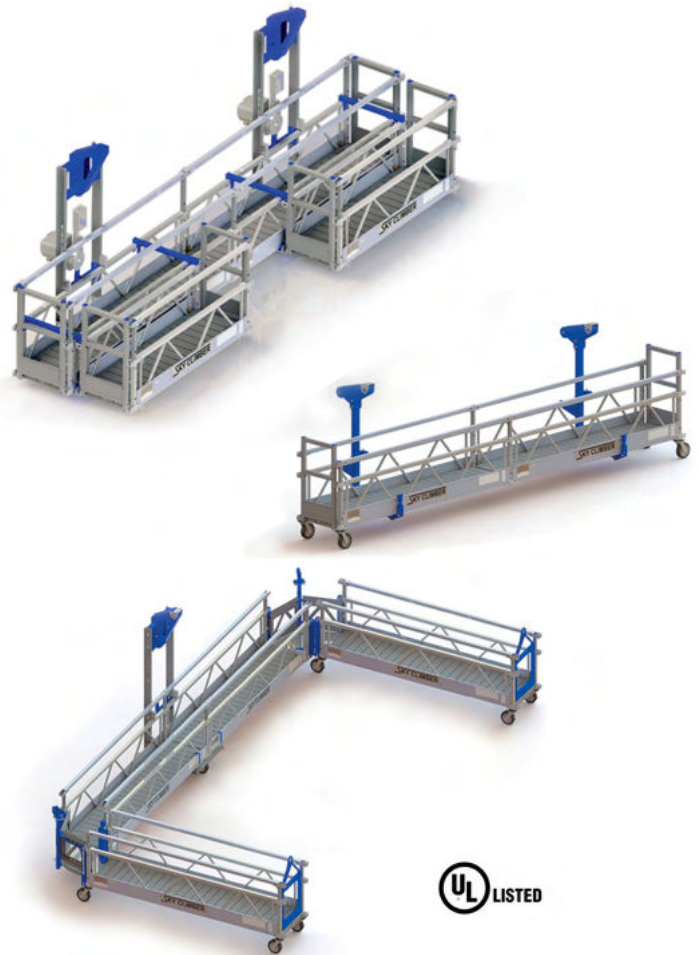
- Load rated up to 2000 lbs
- Dual wire rope capable
- Quick & easy setup requires no tools
- Reinforced, reversible floor panels provide the industry's most stable platform
- Adjustable handrails for more work surface access
- Compatibility with other platforms in the industry increases fleet optimization
- Meets or exceeds OSHA and ANSI standards
- UL Listed (Sa2816)

## COMPONENTS

- Movable Low-profile Stirrups
- Horizontal Hinges
- Adjustable and Fixed Corners
- Wide Area Options (Dance Floor and Decks)
- Solid or grated floor available
- Moveable Walk-thru Stirrup
  - Modular design for easy storage, transport, and replacement
  - Lighter weight with wheels for easier movement

## VERSATILE AND CONFIGURABLE

- 50 ft (15m) span between suspension points (only 2 hoists)
- 70 ft (21m) length is possible with Walk-thru Stirrups
- Up to 3-meter cantilever with use of movable Walkthru Stirrup
- Multi-tier options with trap door floor
- Folding porch options
- Double wide options
- Double high options for higher load ratings
- Platform cable truss options





## INSTRUCTIONS FOR ACTUAL SAFE WORKING LOAD







Sky Stage Ultra (SSU) is a modular platform that combines the best of current technology with new concepts.

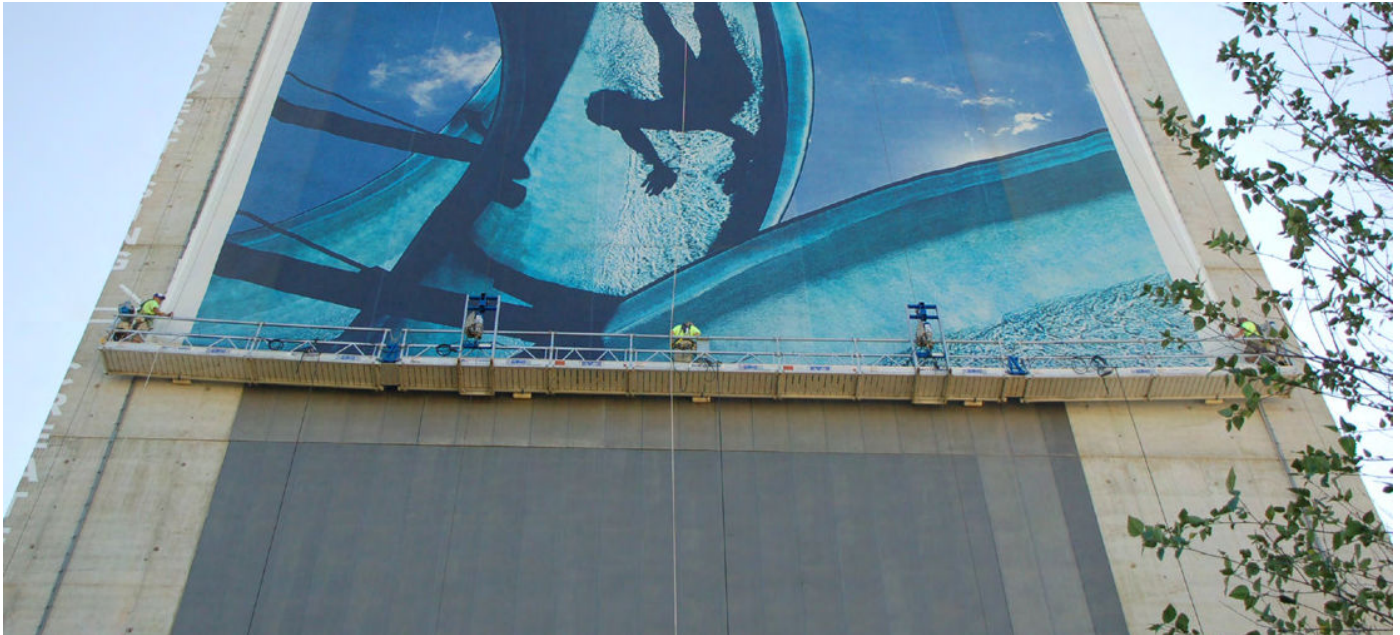
SSU platforms are highly configurable and used across a wide variety of industries.

Add working load limit of hoists. Compare working load limit of hoist with max. safe working load of platform. The LOWEST rating is the ACTUAL SAFE WORKING LOAD.

Read 'Installation Instructions' prior to assembling.

**Safe working load only for configurations with end stirrups.**

Self-Weight	Suspension Distance	Max. Safe Working Load (uniformly distributed)	
249lbs (113kg)	6'9" (2m)	200lbs (900kg)	
285lbs (129kg)	9'9" (3m)	200lbs (900kg)	
363lbs (164kg)	13'6" (4m)	200lbs (900kg)	
399lbs (181kg)	16'6" (5m)	200lbs (900kg)	
435lbs (197kg)	19'6" (6m)	200lbs (900kg)	
512lbs (232kg)	23'3" (7m)	1500lbs (680kg)	
548lbs (249kg)	26'3" (8m)	1500lbs (680kg)	
584lbs (265kg)	29'3" (9m)	1000lbs (450kg)	
662lbs (300kg)	33'0" (10m)	1000lbs (450kg)	
698lbs (316kg)	36'0" (11m)	1000lbs (450kg)	
734lbs (333kg)	39'0" (12m)	1000lbs (450kg)	
811lbs (368kg)	42'9" (13m)	750lbs (340kg)	
847lbs (384kg)	45'9" (14m)	750lbs (340kg)	
883lbs (401kg)	48'9" (15m)	750lbs (340kg)	



### SKY STAGE BY COMPONENT

Description	Part No.	2m	3m	4m	5m	6m	7m	8m	9m	10m	11m	12m	13m	14m	15m
Side Panel - 3 meter	360035	0	2	0	2	4	2	4	6	4	6	8	6	8	10
Side Panel - 2 meter	360033	2	0	4	2	0	4	2	0	4	2	0	4	2	0
Side Panel - 1 meter	360031	0	0	0	0	0	0	0	0	0	0	0	0	0	0
Side Panel - 1.5 meter	360032														
Side Panel - .5 meter	360195														
Floor Panel - 3 meter	360043	0	1	0	1	2	1	2	3	2	3	4	3	4	5
Floor Panel - 2 meter	360042	1	0	2	1	0	2	1	0	2	1	0	2	1	0
Floor Panel - 1 meter	360040	0	0	0	0	0	0	0	0	0	0	0	0	0	0
Floor Panel - 1.5 meter	360041														
Floor Panel - .5 meter	360193														
Top Rail Assembly - 3 meter	360149	0	2	0	2	4	2	4	6	4	6	8	6	8	10
Top Rail Assembly - 2 meter	360148	2	0	4	2	0	4	2	0	4	2	0	4	2	0
Top Rail Assembly - 1 meter	360146	0	0	0	0	0	0	0	0	0	0	0	0	0	0
Top Rail Assembly - 1.5 meter	360147														
Top Rail Assembly - .5 meter	360194														
Connecting Frame	360039	2	2	3	3	3	4	4	4	5	5	5	6	6	6
Telescoping Post	360054	4	4	6	6	6	8	8	8	10	10	10	12	12	12
End Stirrup	360150	2	2	2	2	2	2	2	2	2	2	2	2	2	2
Caster Assembly	360065	4	4	4	4	4	4	4	4	4	4	4	4	4	4
Wall Roller	360111	2	2	2	2	2	2	2	2	2	2	2	2	2	2
Lock Pin	360019	16	16	30	30	30	44	44	44	58	58	58	72	72	72
Moveable Walk-Thru Stirrup	360130									Variable					
Moveable Walk-By Low Profile	361030									Variable					
Adjustable Corner	360100									Variable					
Horizontal Hinge	360105									Variable					
End Gate	360140									Variable					

## Sky Stage Ultra Deck

The Sky Stage Ultra Deck is a highcapacity work platform. Platform size and capacity are easily customizable.

The Sky Stage Ultra Deck uses standard SSU components and can be tailored with sensors, outlets, flooring, scaffolding and other accessories for a versatile and easy-to-use access solution.



### ADAPTABILITY:

- Platform size is customizable to fit applications
- Uses standard SSU components
- Load rating is flexible based on number of hoists and tie-off points
- Can include electrical outlets and other accessories
- Central Control Box operates all hoists at the same time
- Anti-tilt, Underload and Overload Sensors available
- Dual-rope system capable
- Attachments for horizontal life lines

### ADVANTAGES:

- Less expensive than built-up scaffolding
- Cover large areas with one platform
- Easily move between work areas
- Able to put large number of workers and equipment in one area
- Easy to assemble and disassemble on-site, can save weeks of project time
- Breaks down into small components for easy handling and storage

### APPLICATIONS:

Ideal for work on Boilers, Bridges, Off-shore Oil Rigs, Restoration, and many other special applications.



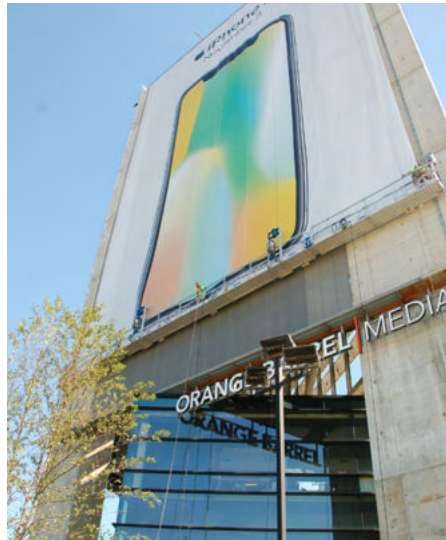


# Custom Platform Engineering

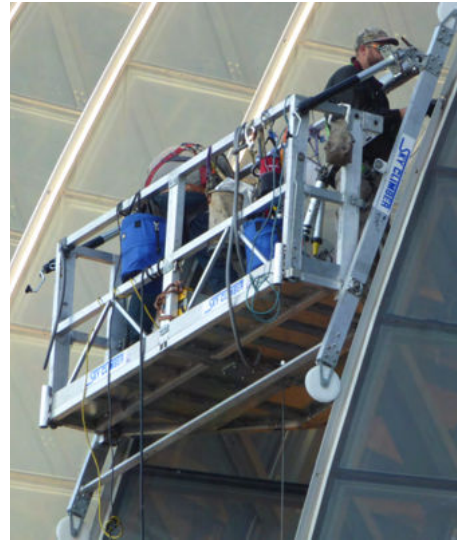
Sky Climber's Engineering, Design, and Manufacturing teams work to provide the safest, most effective platforms available. Our solution-based approach drives us to provide the exact solution you need, when and where you need it.



Bridge Cable Maintenance Platform



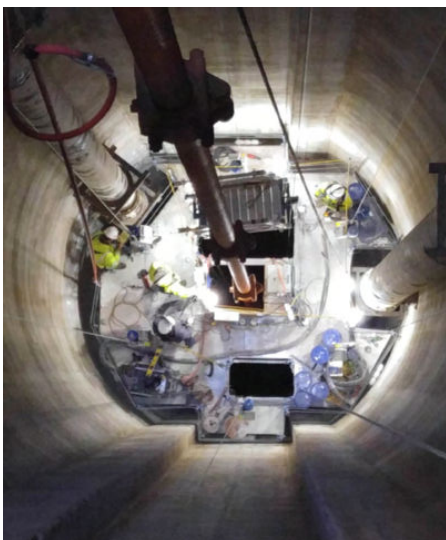
Ad Banner Replacement Platform



Half Barrel Roof Access Platform



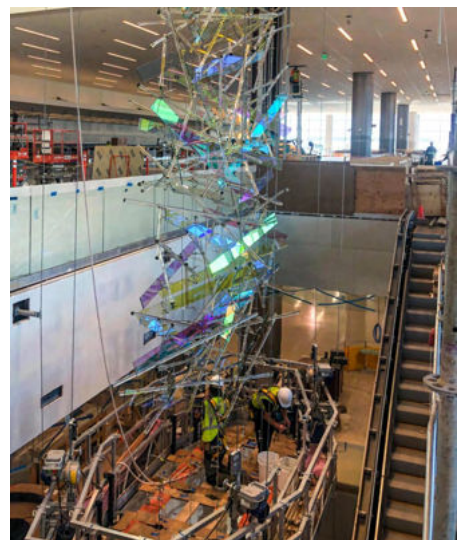
Floating Bridge Maintenance Deck



Dam Shaft Access Platform



Two-Tier Facade Platform



Glass Sculpture Platform

# SSU Standard Accessories

## FLOOR PANELS



### FLOOR PANEL (DECK)

Size	Weight	Part No.
.5m	7 lbs	360193
1m	15 lbs	360040
1.5m	21 lbs	360041
2m	27 lbs	360042
3m	37 lbs	360043



### GRATED FLOOR

Size	Weight	Part No.
.5m	7 lbs	361093-G
1m	15 lbs	360040-G
1.5m	21 lbs	360041-G
2m	27 lbs	360042-G
3m	37 lbs	360043-G

## SIDE AND RAIL COMPONENTS



### SIDE PANEL

Size	Weight	Part No.
.5m	7 lbs	360195
1m	15 lbs	360031
1.5m	21 lbs	360032
2m	27 lbs	360033
3m	37 lbs	360035



### TOP RAIL ASSEMBLY

Size	Weight	Part No.
.5m	1.5 lbs	360194
1m	3 lbs	360146
1.5m	4 lbs	360147
2m	5 lbs	360148
3m	7 lbs	360149



### HORIZONTAL HINGE

Standard Only

Weight	41 lbs
Part No.	360105



### PORCH BRACKET KIT

Includes 2 porch brackets,  
2 spacers, and 8 lock pins

Weight	22 lbs
Part No.	3829



### TELESCOPING POST

Weight	2 lbs
Part No.	360054



### CONNECTING FRAME

Weight	10 lbs
Part No.	360039

# SSU Standard Accessories

## END GATES



### SWINGING END GATES

Weight 18.5 lbs

Outward Swinging Gate

Part No. 360140-1

Inward Swinging Gate

Part No. 3943



### END GATE

Weight 15 lbs

Part No. 360140



### PORCH END GATE

Weight 10.5 lbs

Part No. 3829-1000

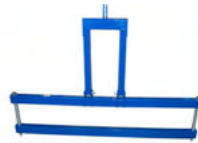
## STIRRUPS



### END STIRRUP

Weight 32 lbs

Part No. 360150



### DOUBLE WIDE STIRRUP

Weight 80 lbs

Part No. 3762



### PIC BOARD STIRRUP

Weight 44 lbs

Part No. 4233-1000



### PASS BY STIRRUP

Weight 96 lbs

Part No. 3689-3100



### SHORT END STIRRUP

Weight 29.5 lbs

Part No. 4007-200



### LOW MOUNT END STIRRUP

Weight 22 lbs

Part No. 3623-3000

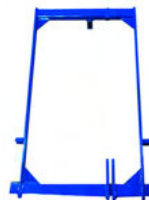


### MOVEABLE WALK-THRU STIRRUP

Weight 125 lbs

Part No. 360130

Dual Rope Capable



### HIGH STABILITY LOW MOUNT END STIRRUP

Weight 34 lbs

Part No. 360220



# SSU Standard Accessories

## CORNERS



### FIXED CORNER

Standard Only. 30°, 45°, 90°

Degree	Part No.	Weight
30°	3604-300	18 lbs
45°	3604-465	26 lbs
90°	3604-900	73 lbs



### ADJUSTABLE CORNER

Standard Only. 0° thru 90°

Weight	132 lbs
Part No.	360100

## WIRE WINDERS



Standard version shown here. See page 24 for Boiler version.

### PASSIVE WIRE WINDER

Weight	40 lbs
Capacity	400'
Part No.	121-1



Control cables (PN 4279-9140-XXM) are sold separately and are available in varying lengths. Standard (0.5, 1, 1.5, 2, 3 meter) and custom lengths available. Call for details.

### HIGH-CAPACITY PASSIVE WIRE WINDER

Part Number	4308-1000
Weight	75 pounds
Capacity	750 feet
Construction	Aluminum

### HIGH-CAPACITY POWERED WIRE WINDER KITS

SINGLE-line Kit (PN 4279-1)

Component	Part No.	Quantity
Powered Wire Winder	4279-1000	2
Central Control Box	4279-9101	1
Junction Box		

DUAL-line Kit (PN 4279-2)

Component	Part No.	Quantity
Powered Wire Winder	4279-2000	2
Central Control Box	4279-9101	1
Junction Box	4279-9121	2



### WIRE WINDER MOUNTING BRACKETS

Weight	40 lbs
Capacity	200'
Type	Part No.
SSU/Boiler	3471-3
Low Profile Stirrup	



### PASSIVE WIRE WINDER HANGER

Weight	20 lbs
Part No.	3933-200



## Standard SSU and Boiler Accessories



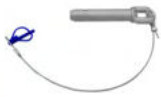
### CASTER ASSEMBLY

Weight	10 lbs
Part No.	360065



### LOCK PIN ASSEMBLES

Steel	360019
Aluminum	360019-AL



### EMERGENCY RESPONSE KIT

Includes Fire Extinguisher, First Aid Kit, and Bodily Fluids Cleanup Kit

Part Number:	4179-315
--------------	----------



### MOVEABLE WALK-BY LOW PROFILE STIRRUP

Weight	126 lbs
Part No.	361030



### ADJUSTABLE HEIGHT STIRRUP

Weight	100 lbs
Part No.	3590-5000



### WALL ROLLER

Weight	10 lbs
Part No.	360111



### EXTENDABLE WALL ROLLER - STD

Weight	22 lbs
Part No.	4087-100



### EXTENDABLE WALL ROLLER - DLX

Weight	24 lbs
Part No.	4087-200



### TWO POINT ATTACHMENT FOR LOW PROFILE STIRRUP

Weight	126 lbs
Part No.	361054

Dual Rope Capable



### TOOL BOX

Weight	15 lbs
Part No.	4068-152
Size	Large

## Welding Protection



### WELDING GROUND CABLE

Part No.	53008100
----------	----------



### THIMBLE

Part No.	119-77
----------	--------










# Sky Stage Ultra Boiler Platform

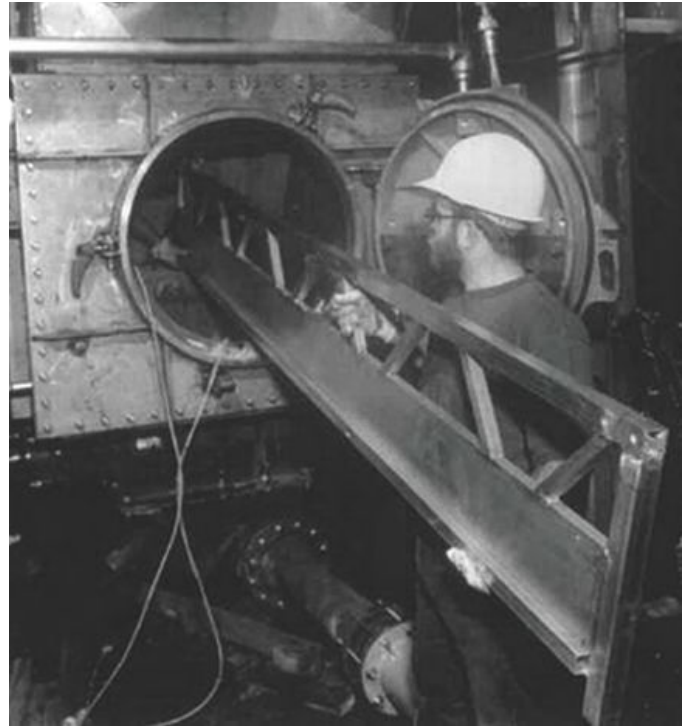
## Easy, fast and modular access platforms

- Folds to fit through openings as small as 18" round
- 1250 lbs load rating from 1m to 6m lengths
- 1000 lbs load rating from 7m to 9m lengths
- Transport a 30 foot platform (or larger) in the bed of your pick up truck
- Use Boiler End gates and movable stirrups for more versatility
- Components unfold to provide full-size platform & performance
- Workers set up a platform in 20 minutes
- Adjustable hand rails add versatility and increase work surface space
- 45 Deg. fixed corners available



Stop paying high labor and erection costs for stack or system scaffolding

Self-Weight	Suspension Distance	Max. Safe Working Load (uniformly distributed)	
175lbs (89kg)	3'9" (1m)	1250lbs (560kgs)	
249lbs (118kg)	6'9" (2m)	1250lbs (560kgs)	
265lbs (129kg)	9'9" (3m)	1250lbs (560kgs)	
363lbs (164kg)	13'6" (4m)	1250lbs (560kgs)	
399lbs (181kg)	16'6" (5m)	1250lbs (560kgs)	
435lbs (197kg)	19'6" (6m)	1250lbs (560kgs)	
512lbs (232kg)	23'3" (7m)	1000lbs (450kgs)	
548lbs (249kg)	26'3" (8m)	1000lbs (450kgs)	
584lbs (265kg)	29'3" (9m)	1000lbs (450kgs)	



### SKY STAGE BOILER BY COMPONENTS

Description	Part No.	2m	3m	4m	5m	6m	7m	8m	9m
Side Panel Boiler - 3 meter	361019	0	2	0	2	4	2	4	6
Side Panel Boiler - 2 meter	361023	2	0	4	2	0	4	2	0
Side Panel Boiler - 1 meter	361027	0	0	0	0	0	0	0	0
Side Panel Boiler - .5 meter	361210								
Floor Panel Boiler - 3 meter	361021	0	1	0	1	2	1	2	3
Floor Panel Boiler - 2 meter	361025	1	0	2	1	0	2	1	0
Floor Panel Boiler - 1 meter	361029	0	0	0	0	0	0	0	0
Floor Panel Boiler - .5 meter	361211								
Top Rail Assembly Boiler - 3 meter	361010	0	2	0	2	4	2	4	6
Top Rail Assembly Boiler - 2 meter	361022	2	0	4	2	0	4	2	0
Top Rail Assembly Boiler - 1 meter	361026	0	0	0	0	0	0	0	0
Top Rail Assembly Boiler - .5 meter	361212	0	0	0	0	0	0	0	0
Connecting Frame Boiler Version	361015	2	2	3	3	3	4	4	4
Telescoping Post Boiler Version	361014	4	4	6	6	6	8	8	8
End Stirrup Boiler Version	361011	2	2	2	2	2	2	2	2
Caster Assembly*	360065	4*	4*	4*	4*	4*	4*	4*	4*
Wall Roller Assembly	360111	2	2	2	2	2	2	2	2
Safety Pin Assembly	360019	16	16	30	30	30	44	44	44
Moveable Walk-By Low Profile Stirrup	361030	Variable							
End Gate Boiler Version	361051	Variable							
Work Cage - 1 meter	368000-LMW01								
Work Cage - 2 meter	368000-LMW02								

\*Optional Item - not included with boiler stages

# SSU Boiler Accessories



## SIDE PANEL

Size	Weight	Part No.
.5m	8 lbs	361210
1m	15 lbs	361027
2m	21 lbs	361023
3m	29 lbs	361019

## TOP RAIL ASSEMBLY

Size	Weight	Part No.
.5m	4 lbs	361212
1m	6 lbs	361026
2m	10 lbs	361022
3m	15 lbs	361010



## FLOOR PANEL

Size	Weight	Part No.
.5m	9 lbs	361211
1m	20 lbs	361029
2m	30 lbs	361025
3m	38 lbs	361021



## BOILER CONNECTING FRAME

Weight	10 lbs
Part No.	361015



## BOILER END GATE

Weight	15 lbs
Part No.	361051



## BOILER TOP RAIL POST

Weight	2 lbs
Part No.	361014



## BOILER END STIRRUP

Weight	32 lbs
Part No.	361011



## LOW MOUNT BOILER STIRRUP

Weight	20 lbs
Part No.	3623-1000



## BOILER NON POWERED WIRE WINDER

Weight	40 lbs
Capacity	200'
Part No.	121-1-B



## WIRE WINDER MOUNTING BRACKETS

Weight	40 lbs
Capacity	200'
Type	Part No.
SSU/Boiler	3471-3
Low Profile Stirrup	3516-100





## Sky Stage Ultra Work Cage

- Aluminum and Steel construction for a strong, yet light-weight stirrup
- Modular design for easy storage, transport, and replacement of damage components
- Includes wheels, for easier transport

- Top and bottom slated floors
- Floor handles for easy movement
- Solid or grated floor option available
- Dual rope capable

Custom Sizes Available



### SKY STAGE ULTRA WORK CAGE WITH MOVEABLE WALK-THRU STIRRUP

Size	Load Rating	Weight	Part No.
1m	1250 lbs	253 lbs	369000-W01
1.5m	1250 lbs	316 lbs	369000-W015
2m	1250 lbs	330 lbs	369000-W02



### SKY STAGE ULTRA WORK CAGE WITH MOVEABLE WALK-BY LOW PROFILE STIRRUP

Size	Load Rating	Weight	Part No.
1m	1250 lbs	323 lbs	369000-LMW01
1.5m	1250 lbs	355 lbs	369000-LMW15
2m	1250 lbs	378 lbs	369000-LMW02



### SSU BOILER WORK CAGE WITH MOVEABLE WALK-BY LOW PROFILE STIRRUP

Size	Load Rating	Weight	Part No.
1m	1250 lbs	299 lbs	368000-LMW01
2m	1250 lbs	365 lbs	368000-LMW02

# Low Profile & Fold Up Work Cages



*Pictured here with hoist for display purposes only. Hoist not included.*



## LOW PROFILE KNOCK DOWN (LPKD) WITH EXPANDED METAL FLOORS

Dismantles to fit through 18" opening

Load Rating	1000 lbs
Weight	155 lbs
Dimensions	53"h x 37"w x 34.5"d
Part No.	106-203-X
Wall Roller	112-125
Wire Winder Mount and Caster Kit	106-239

## LOW PROFILE KNOCK DOWN (LPKD)

Dismantles to fit through 18" opening

Load Rating	1000 lbs
Weight	100 lbs
Dimensions	53"h x 37"w x 34.5"d
Part No.	106-203
Wall Roller	112-125
Wire Winder Mount and Caster Kit	106-239

## FOLD UP WITH EXPANDED METAL FLOORS

Folds Flat (Umbrella Type). Fits through 18" opening. Steel

Load Rating	1000 lbs (500 lbs each side)
Weight	180 lbs
Dimensions	82"h x 70"w x 17.25"d
Part No.	106-196-X

## FOLD UP WITH WOOD FLOORS

Folds Flat (Umbrella Type). Fits through 18" opening. Steel and Wood

Load Rating	1000 lbs (500 lbs each side)
Weight	132 lbs
Dimensions	82"h x 70"w x 17.25"d
Part No.	106-196

# Special Access Baskets, Platforms

## BOSUN CHAIR

Compatible with most industry hoists

Extra Back Support

Wheels for easy transport

Weight 39 lbs

Part No. 104-43

Part No. Chair Replacement 104-42

Part No. Front Wheel Only 104-29

Part No. Rear Wheel Only 104-36



## FALSE CAR

Compatible with All Sky Climber Hoists and most industry hoists

Weight 758 lbs

Part No. 3850-1000

Depth 47.25" - 86.5"

False Car w/out Canopy PN: 3850-1000

False Car WITH Canopy PN: 3850-2000

- For temporary use in elevator shafts to install rail-systems of permanent elevators.
- System is designed for T-rail sizes: 1-1/4", 1-1/8", 3/4", 5/8", 3/8"
- Wood floor and wood handrails
- Canopy, height extension (51"), and bottom limit trip bar are additional options



## ANGEL WING BASKET

Angel wing baskets provide a simple, low cost solution for spot work on steel structures by allowing a worker to hook and clamp the angel wing basket into place on horizontal flanged steel beams.

Durable, lightweight aluminum construction can be easily installed and relocated by one worker

Basket easily folds flat for convenient transport and storage

Provides full toe board, mid rail, and handrail protection

Fits steel beam widths from 5" to 19" and flange thicknesses up to 1.5"

Capacity 500 lbs

Dimensions Weight Part No.

24"x30"x66" 47 lbs 3830-4000

24"x42"x66" 54 lbs 3830-4500

24"x57"x66" 66 lbs 3830-5000





## Custom Work Cage Solutions

Sky Climber designs and manufactures custom work cages to meet unique and challenging applications. If you have a project that requires a work cage with a special size, shape or capacity, we can help! Contact us at 800-255-4629.



Steel Crane Basket



Work Cage & Retractable Lifelines



Cofferdam Access Platform



Round Aluminum Work Cage



Auto-folding Work Cage



Pier Platform



## Custom Platforms and Work Cages



Curved Double-wide Platform



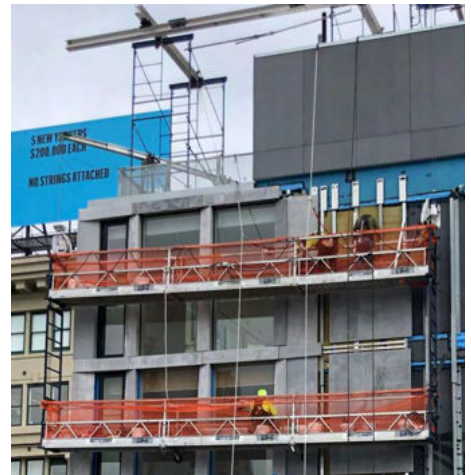
Concrete Shell Roof Access



Counterbalanced Down-and-Under Platform



Shaft Access Platform



Multi-tier Access Platform



Round Steel Work Cage



Rolling SSU Deck under Pedestrian Walkway



Barge Access System with Powered Trolley

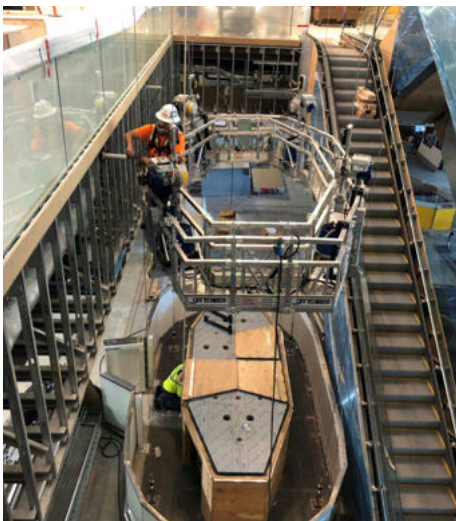


## Engineering Services And Solutions

Sky Climber's Engineering, Design, and Manufacturing teams work to provide you the best solution for your project. Our solution-based approach allows us to simplify the process, from design consultation to system commissioning and support.

- Layout and Design
- PE Stamped Drawings
- Standard and Custom Manufacturing
- Installation and Project Management
- Testing and PE Certification

Check out the Sky Climber Blog → for case studies and project solutions. Scan this code with your smartphone to read more.



Glass Sculpture Platform



Splitting Platform



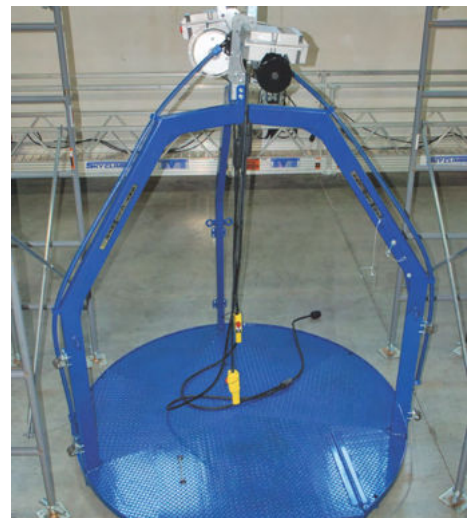
Museum Artifact Maintenance Platform



Boiler Stage with Canopy

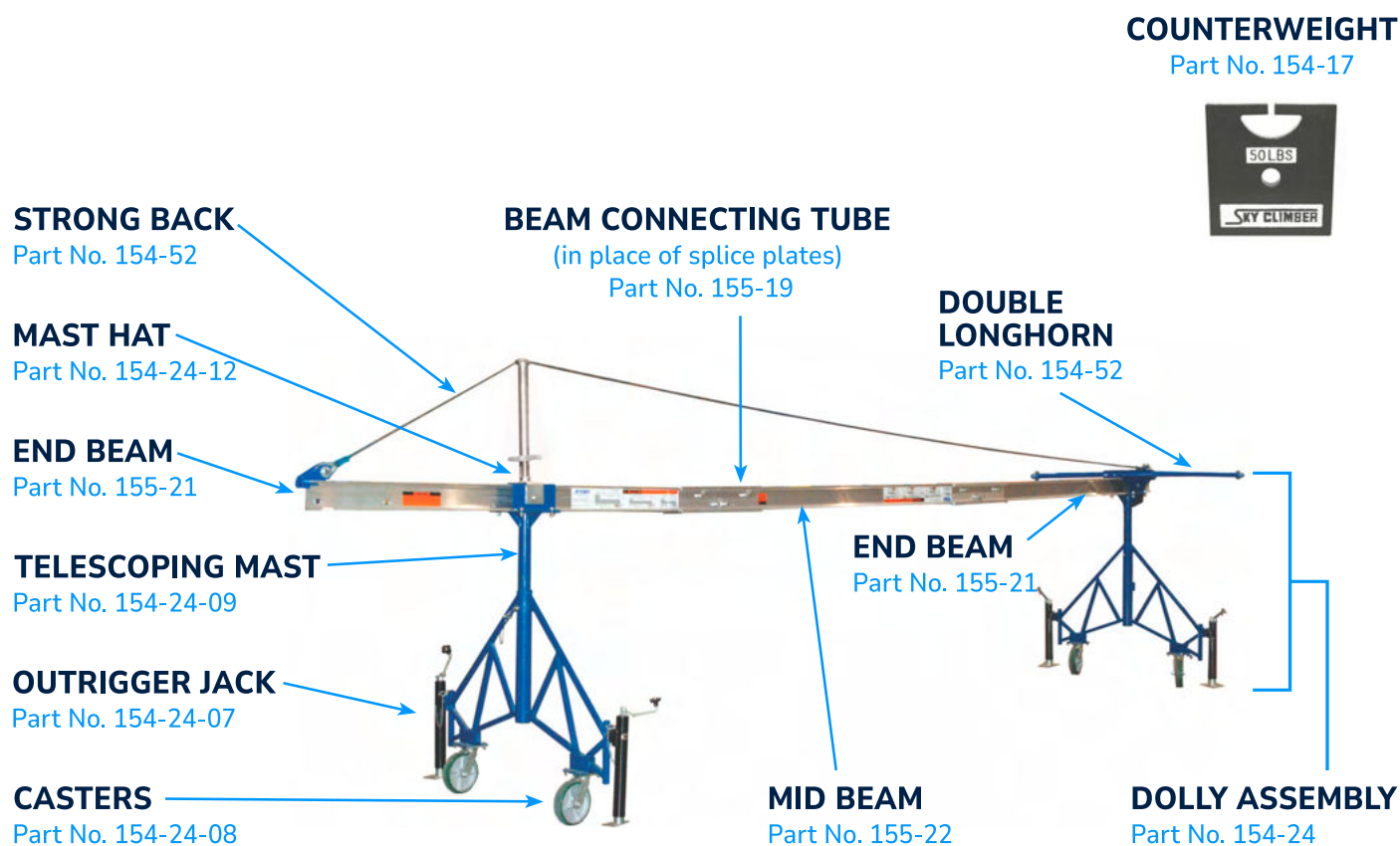


Corner Access Platform



Mining Platform

# Rolling Roof Rigging



## ROLLING ROOF RIG PACKAGES

Part No.	Length	Description
154-24-A	16 ft system	(2) 8 ft beams with all components, splice plates only, except counterweights
154-24-B	24 ft system	(3) 8 ft beams with all components, splice plates only, except counterweights
154-24-C	24 ft system	(3) 8 ft beams with all components, splice plates only, includes strong back - except counterweights
154-24-ABT	16 ft system	(2) 8 ft beams with all components, includes beam connecting tube, except counterweights
154-24-BBT	24 ft system	(3) 8 ft beams with all components, includes beam connecting tubes, except counterweights
154-24-CBT	24 ft system	(3) 8 ft beams with all components, includes beam connecting tubes - strong back assembly, except counterweights
155-16-1	8 ft system	(1) 8 ft mid-beam with splice plates
155-16-1BT	8 ft system	(1) 8 ft mid-beam with beam connecting tube
155-3-2	16 ft system	(2) 8 ft split-beam assembly with splice plates
155-3-2BT	16 ft system	(2) 8 ft split-beam assembly with beam connecting tube
155-21	8 ft system	(1) end-beam with decals
155-22	8 ft system	(1) mid-beam with decals

# Sky Rig

100% interchangeable with existing fleets

## WEIGHT BAR

Part No. 3835-1000-3

## BEAM CONNECTING TUBE

(in place of splice plates)  
Part No. 155-19

## TELESCOPING MAST HEAD

Part No. 3835-1000-2

## END BEAM

Part No. 155-21

## COUNTERWEIGHT

Part No. 154-17

## DOLLY ASSEMBLY

Part No. 3835-1000

## CASTERS

Part No. 3835-1000-5

## END BEAM

Part No. 155-21

## OUTRIGGER JACK

Part No. 3835-0400

## FEATURES

- Can be set directly onto a scaffold frame
- Kits and Components at prices that make sense
- 100% interchangeable with existing fleets
- No hand tools required for assembly

## SKY RIG SPECIFICATIONS

**Load Capacity** 1500 lbs

### Max Outreach

With Standard 5ft

With 8ft Beam Tube 8 ft

**Parapet Clearance** 42" to 72"

**Construction** Steel/Aluminum

**Finish** Galvanized/Aluminum

### Kits:

Description	Part No.
8ft Beam Tube Kit	3835-DBT
16 ft Rolling Roof Rig	3835-ABT
24 ft Rolling Roof Rig	3835-BBT
24 ft RRR w/ Strongback	3835-CBT
Dolly Assembly	3835-1000



**New: Dolly Packages available**

Can be set directly onto a scaffold frame

## SKY RIG DOLLY ASSEMBLY 3835-1000

Included components

Description	Part No.	Quantity
Jack	3835-0400	2
Frame	3835-1000-1	1
Mast Head Assembly*	3835-1000-2	1
Weight bar (longhorn)	3835-0300	1
Caster assembly	3835-1000-5	2
Washers	107-684	2
Pins	3788-42	3

\*Standard-sized Mast Head Assembly accommodates standard beams. To fit an 8' Beam Tube, order the Large Mast Head Assembly, Part Number 3835-1000-4.



# Roof Rigging Accessories



## CORNICE HOOK

Size	Weight	Part No.
9 in	21 lbs	149-5
14 in	38 lbs	149-6
18 in	41 lbs	149-24
22 in	54 lbs	149-7



## STAND OFF

Used with Cornice Hook

<b>Weight</b>	9 lbs
<b>Part No.</b>	119-25



## EDGE ROLLER

Repositions workers away from roof's edge

Prevents rope from becoming dangerously frayed. Extends life of lifelines, electrical cords & wire ropes

Prevents parapet wall damage

<b>Weight</b>	5 lbs
<b>Part No.</b>	720001



## CORNER ADAPTER

<b>Weight</b>	60 lbs
<b>Part No.</b>	154-32

## STRONG BACK ASSEMBLY

New design works on Rolling Roof Rig AND Sky Rig models.

<b>Weight</b>	25 lbs
<b>Part No.</b>	154-52
<b>Length Reduction Kit (for 16-ft conversion)</b>	154-26-16



## FULLY ADJUSTABLE PARAPET CLAMP

Outreach 16", 20", and 24" from wall. 6 to 32" wall opening

Rated at 1500 lbs

<b>Weight</b>	25 lbs
<b>Part No.</b>	154-52



## SLAB EDGE CLAMP

<b>Load Rating</b>	1250 lbs
<b>Weight</b>	97 lbs
<b>Part No.</b>	4023-2000



## RING GIRDER ROLLER

1000 lbs Capacity

Upper Portion 5" min

<b>Weight</b>	25 lbs
<b>Part No.</b>	154-10



## PENTHOUSE CLAMP

<b>5 ft Outreach</b>	25 lbs
----------------------	--------

**Complete assembly with Beam** PN: 4108-4

**Clamp Assemblies only (no beam)** PN: 4108-3

Hoist Load	Max Outreach
1000 lbs	36 in
1250 lbs	28 in
1500 lbs	24 in



## OUTRIGGER JACK

<b>Weight</b>	10 lbs
<b>Part No.</b>	154-24-07



### 8FT END BEAM

Weight 52 lbs

Part No. 155-21



### MID BEAM

Weight 52 lbs

Part No. 155-22



### DOUBLE LONGHORN

Weight 50 lbs

Part No. 154-25



### BEAM CONNECTING TUBE

Weight 25 lbs

Eliminates nuts & bolts. Beam connector cuts rigging time by 60%

2' Part No. 155-19

3' Part No. 155-30

8' Part No. 155-28



### BEAM SADDLE

For flat positioning of beam on roof, parapet or other flat surface; used with beams

Weight 30 lbs

Part No. 154-28



### STEEL COUNTERWEIGHT

Weight 50 lbs

Part No. 154-17



### SPLICE PLATE

Nut Part No. 107-337(8)

Screw Part No. 107-935(8)

Part No. 155-45



### RIGGING COLLAR

Weight 15 lbs

Place anywhere on the 5x5 rigging beam for an adjustable suspension or tie back options

Part No. 154-33



### C STYLE RIGGING COLLAR

Weight 10 lbs

Custom made to fit specific structural beams

Part No. 3910-100



### TANK TOP ROLLER

Weight 45 lbs

Part No. 154-3



### BEAM TUBE TOP HAT

Oversized top hat fits 8' beam tube on Rolling Roof Rig

Weight 10 lbs

Part No. 155-29-1

# Specialty Rigging Products



## SIMPLE HEADER BEAM

24" Part No.	3566-200
36" Part No.	3566-201
60" Part No.	3566-2002
Tie Down Clamp	4218-2000

## COUNTERWEIGHT CART

Load Capacity	2000 lbs
Part No.	4352-1000

## ADJUSTABLE BEAM CLAMP

10,000 lb rating	P/N 146-52
5000 lb rating	P/N 146-53

## BEAM TROLLEY

Support Weight	5000 lbs
Part No.	146-105

## ADJUSTABLE HEADER BEAM KIT

Part No.	3566
----------	------

### KIT INCLUDES:

Header Beam (2x)	3566-1
Beam Clamp (2x)	3566-2
Beam Header Mount (4x)	3566-3
Counterweight Mounting Kit (1x)	3566-4
Latch Pin (2x)	361172

### COUNTERWEIGHT MOUNTING KIT INCLUDES:

Longhorn Connector	3566-41
Turnbuckle	3566-42

### MOUNTING KIT DOES NOT INCLUDE:

Longhorn	154-25
Rigging Collar	154-33
Shackle	119-8
Counterweight	154-17
Wire Rope	51008306-CUT

## PIGEON HOLE STANDS

Capacity	1500 lbs
----------	----------

Powder Coated Steel

12" x 12" x 13 1/4"

Weight	30 lbs
--------	--------

Single PN:	154-34
------------	--------

Dual PN:	3589-1000
----------	-----------

## ADJUSTABLE RESCUE TRIPOD

Capacity	1500 lbs
----------	----------

Folding Legs

Weight	55 lbs
--------	--------

Part No.	3693-1000
----------	-----------

New Tripod designs available online



## DOWN AND UNDER

Reach - Down	60-96 inches
Reach - Under	24-48 inches
Max Hoist Capacity	1500 lbs
Weight	115 lbs
Heaviest Piece	40 lbs
Part No.	3453-10



## CORNER ADAPTER

Reduces outreach by moving fulcrum closer to parapet

Reduces quantity of counterweights

Can eliminate need for a cable-truss/strongback usage

Allows for better platform position; fits flush against parapet corner

Compatible with all current model Sky Climber Rolling Roof Rigs with no product modifications

Maintains height adjustment of beam; no tools required for assembly

Part No.	154-32
Weight	60 lbs
For Sky Rig Frames - Part No	3835-0150

Rolling Roof Rigging and its accessories save you time and money. The Rigging Collar, Corner Adapter and 8' Beam Connecting Tube will easily integrate with your current equipment. No upgrades, changes or rework required.

Telescoping mast enables you to raise the beam up over a 5 foot parapet wall. Strong back assembly also available for 16-foot rolling roof rig systems. Obtain 6-foot outreach with 1250 lbs capacity hoist.



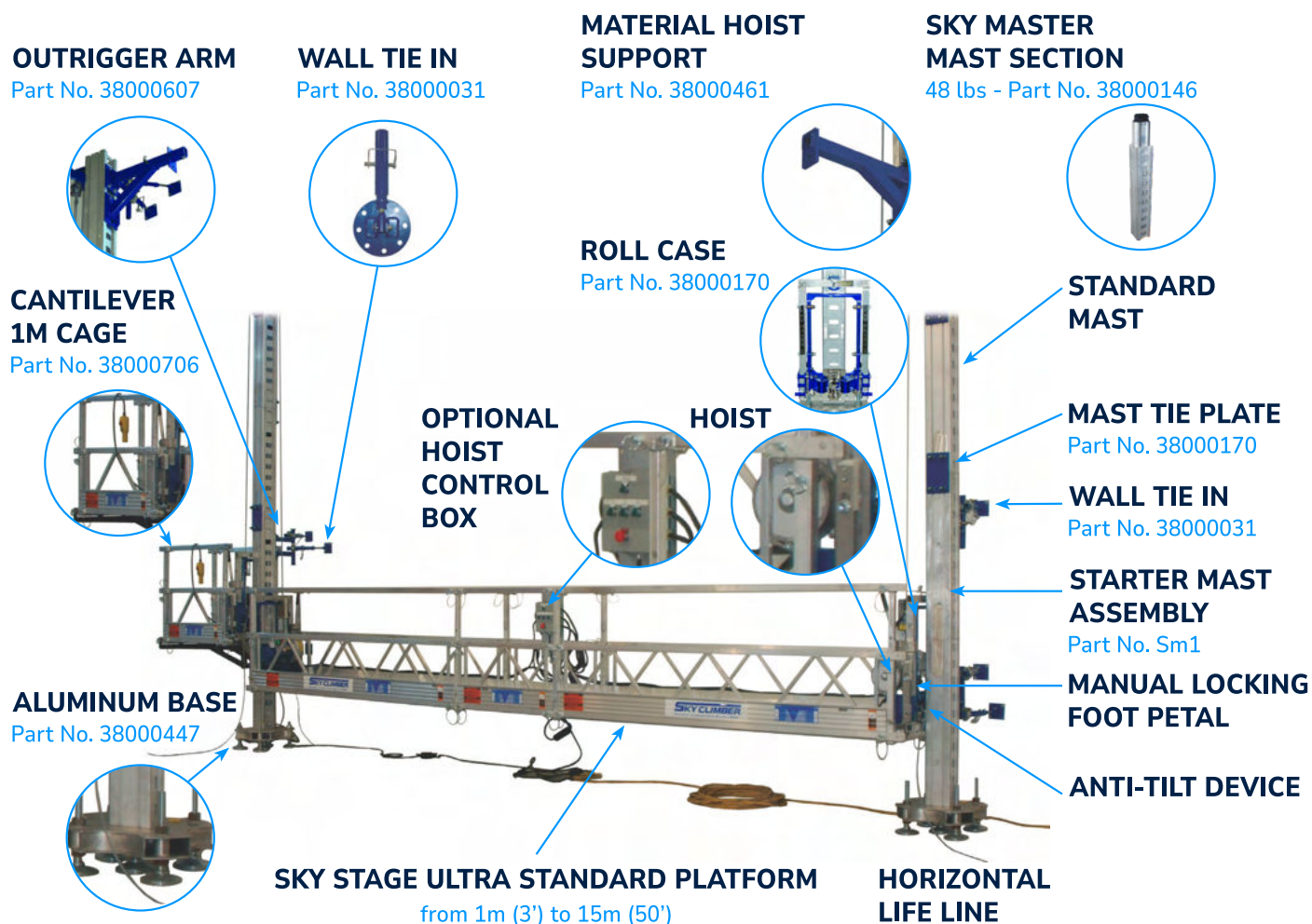


# SKYMASTER

**SKYMASTER®** is a mast system that incorporates the use of standard Sky Climber platforms or work cages and standard Sky Climber hoists. No top side rigging is used on SKYMASTER®. Horizontal lifelines are used eliminating separate tie-off points on top side.

**SKYMASTER®** is lighter than traditional mast climbing systems and is easily portable in the bed of a pickup truck. This ease of mobility means an immediate savings in transportation costs and lower erection and dismantle expenses.

The system was originally developed for restoration contractors that needed suspended access without topside rigging. Almost immediately, new applications for this versatile equipment came to light. Tank painters began using the **SKYMASTER®** on "silo type" and "top" tanks. The wall tie brackets can be welded or epoxied to the tank for future repainting, making the E&D a breeze.



## SKY MASTER ASSEMBLIES

<b>Starter Kit:</b>	Part No. Sm1 (Includes 1 Aluminum Base, 1 Starter Mast, 1 Roll Case, and 1 Carriage)
<b>Wall Tie Assembly:</b>	Part No. 38000031
<b>Mast Tie Assembly:</b>	Part No. 38000440
<b>Base Assembly (aluminum):</b>	Part No. 38000447
<b>Base Assembly (steel):</b>	Part No. 38000596
<b>Starter Mast 7'8":</b>	Part No. 38000024
<b>Roll Case:</b>	Part No. 38000170
<b>Lite Roll Case:</b>	Part No. 4011-100
<b>Carriage:</b>	Part No. 38000421

### MAST:

- 45 in (46lbs) mast sections
- Easy interlocking masts
- Lightweight, strong, aluminum extrusion
- Self aligned / self guided

### TIE-IN:

- Adjustable/sliding design for easy installation every 15-20 ft
- Flexible / easy alignment
- Quick connect / disconnect features "T" bolt design

### HOISTS AND HOIST CONTROL OPTIONS:

- Works with Sky Climber Compact Hoists, LNX hoists, and competitors' hoists
- Air or Electric powered
- Sky Climber pendant controls
- Sky Climber Central Control Box

### CARRIAGE:

- Lightweight pushup carriage
- "Pull" release for descent
- Safety device prevents carriage separating from the mast
- Slides easily on mast

### DESIGN:

- Use with single mast work cage or double mast platform system
- Allows access around a building or other structure
- Allows access to buildings with slanted roofs or overhangs
- Up to 2000 live load capacity depending on length
- Up to 15m (49 ft) length of platform (2 mast system)
- Up to 400 ft max height with steel base
- Up to 200 ft height with aluminum base





# Single Mast Transport Platform

## VERSATILITY

Sky Climber equipment is designed for versatility. For example, the work cage shown here can be used as a material lift or as a small “buck hoist” on built-up scaffold projects.

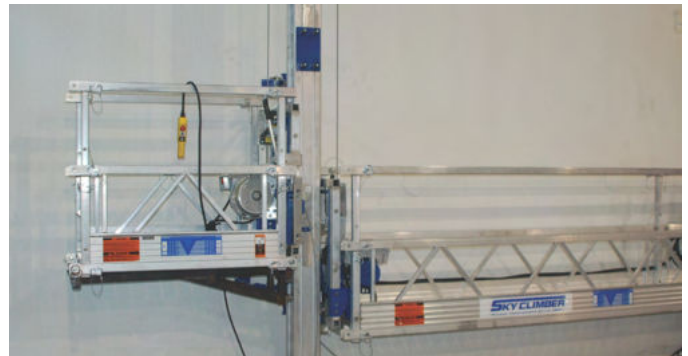
*\*Note the fold down floor for egress.*

## ACCESSORIES

Single line work cages in either orientation can be incorporated onto the standard mast and roll case.

### SINGLE MAST TRANSPORT

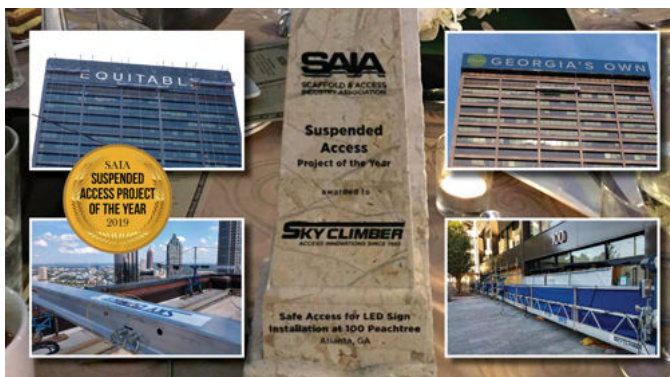
These platforms are designed to meet project-specific requirements. Call us and one of our engineers will help you find the right product to fit your access need.



## Project News

Get the latest information on Sky Climber project stories, product announcements and company news on our Blog. Or you can get this all delivered to your inbox by signing up for our newsletter. Don't miss out – we offer special sales for Sky Climber Dealers too.

Scan this code with your smartphone to check out our Blog.



# Fall Arrest Equipment

*\*Some products may have changed.  
Contact Customer Support*



## LIFELINE TERMINATION PLATE

Part No. 01300



## LIFELINE, BULK

Size	Spool Size	Part No.
5/8"	600 ft	310170
5/8"	1200 ft	310171
3/4"	600 ft	310172
3/4"	1200 ft	310173



## TOGGLE LOK ANCHORAGE

Part No. 310272

## REINFORCED LEATHER GLOVES

Size	Part No.
Medium	310266
Large	310267
Extra Large	310268



## CONSTRUCTION HARNESS W/ TONGUE BUCKLE LEG STRAPS & WAIST STRAP

Size	Part No.
Small	193130
Medium - XL	193131
XXL	193132



## LIFELINE PROTECTOR

Part No. 119-94



## VERTICAL LIFELINE ASSEMBLY

Length	Part No.
50 ft	01320
75 ft	01323
100 ft	01324
130 ft	01325
150 ft	01327
200 ft	01326



## LIFELINE LANYARDS

Length	Part No.
3' Lanyard	01226
6' Lanyard	01227



## 6 FT RETRACTABLE LIFELINE

Type	Part No.
Single	01228
Double	01229



## MEGA SWIVELS

10K Anchorage for concrete and steel	310273
Replacement Bolt Kit for Concrete	310273-1



## REMOVABLE ANCHORS

3/4" Portable Concrete

Part No. 310270

1" Portable Concrete

Part No. 310271





## Permanent Access Equipment

**Sky Climber®** is the most comprehensive provider of powered access and related safety solutions in the industry. Since 1955, **Sky Climber®** has been serving customers with a variety of permanently installed products from powered platforms and roof machines to davits and sockets and monorail systems.

Sky Climber offers a full line of Permanent Access products, including:

- Roof and Wall Anchors
- Davits
- Fixed Outriggers
- Portable Outriggers
- Rigging Sleeves
- Powered Platforms
- Building Maintenance Units (BMUs)
- Monorail Systems





## Powered Platforms

Sky Climber Engineered Platforms for Permanent Installations have been newly redesigned with a modular concept. Users will enjoy the features of our original platforms plus the benefits of this new standardized design with:

- Greater compatibility with standard equipment;
- Faster production times from our USA factory; and
- Better availability of replacement and repair parts.

This platform comes in several configurations with optional accessories such as mullion guides, extendable ends, and extendable wall rollers available.

- Ideal for new construction AND retrofits
- Highly customizable with 2-line or 4-line systems, multiple power source options, wall rollers and façade stabilization types and more.



**New  
Modular  
Design**

### Permanent Installation SKY STAGE ULTRA PLATFORM



Our SSU Platform for Permanent Installations has been newly redesigned with a modular concept. Sky Climber customers will enjoy the features of our original Sky Stage Ultra platform plus the benefits of this new standardized design.

Users will see greater compatibility with standard equipment, faster production times from the factory, and better availability of replacement and repair parts.

This platform comes in several configurations with optional accessories such as mullion guides, extendable ends, and extendable wall rollers available.



**System Features**

- ▣ Sky Climber UNX Hosts
- ▣ SkyLock Brake System with secondary interlock
- ▣ Central Control Box
- ▣ Dual Electric Powered Wire Winders
- ▣ Sky Stage Ultra Modular Platform

**Safety Features**

- ▣ Anemometer for mounting on building
- ▣ Upper Limit Control Switch
- ▣ Over and Under Load Shutoff Sensors
- ▣ Top Limit Device
- ▣ Lower Obstruction Sensor for auto shut off
- ▣ Continuous horizontal safety line
- ▣ Anti-tit control shutoff
- ▣ Fire extinguishers

**Safety Specifications**

- ▣ U.L. Classified
- ▣ Meets / exceeds all OSHA and ANSI requirements
- ▣ Meets / exceeds all requirements for New York City / State and the California Dept. of Labor

**Sample Configurations**

Single-man Work Cage	1.5M End Section with CCB
6-Meter Platform	1.5M End Section with CCB + 3M Section + 1.5M End Section
8-Meter Platform	1.5M End Section with CCB + 3M Section + 2M Section + 1.5M End Section
9.5-Meter Platform	1.5M End Section with CCB + 3M Section + 2M Section + 1.5M Section + 1.5M End Section

Additional configurations available. Call for options and details.



Work Cage Configuration

888.255.4629 | info@skyclimber.com

W W W . S K Y C L I M B E R . C O M





# Monorail

Monorails are often the practical solution for access to the underside of a structure. From overhangs to atriums, Monorail Systems provide complete access for rope descent or powered platform applications.

- Internal and External tracks
- Side or top-mount brackets
- Radius curves
- Switches and turntables
- Manual Driven, Rope Driven, and Motor Driven trolleys available
- Full USA-Standard design/engineering packages available



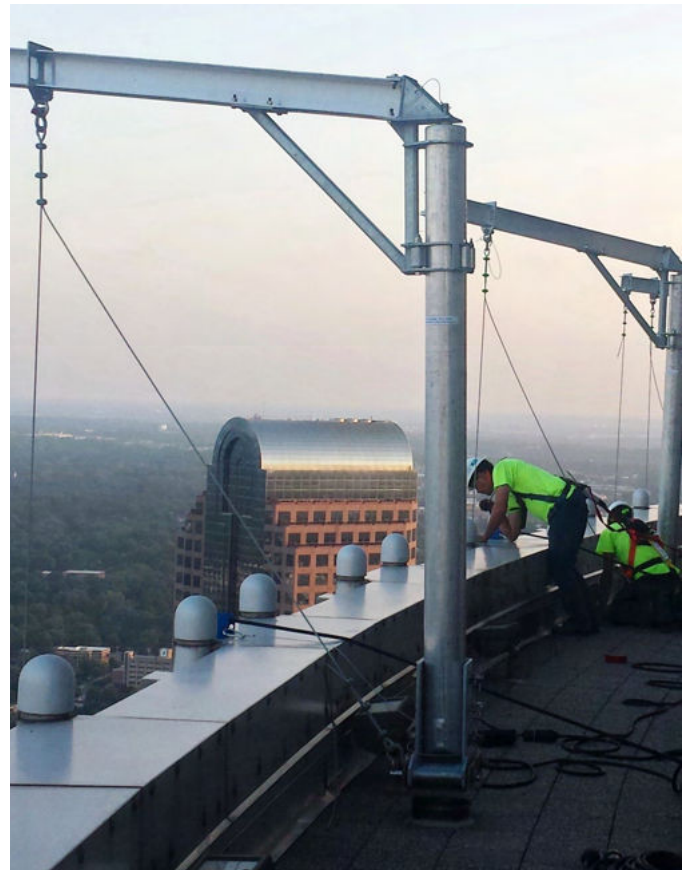


# Davits

- Manufactured in USA
- New installations or replacement/ additional quantities
- Sky Climber can match or retrofit most existing sockets with our Custom Socket Program
- Full line of davit arms and attachments
  - For both powered platform and RDS applications
  - 2-line & 4-line systems
  - Flexible reach & capacities
  - Ground & roof launch models
  - Fixed, mobile, and flush/ recessed sockets



GROUND-LAUNCHED DAVIT



## Roof Anchors

Sky Climber offers a full line of Tieback Anchors for Rope Descent and Powered Platform applications. Our anchorage products are manufactured in our US facility by certified welders, with full engineering data packages and support by our own staff of Professional Engineers.

Our anchors are California / 2015 IBC compliant and are available in a variety of sizes and mounting styles. Custom fabrication is also available. Call us today for details.

- All models are stronger than the common 5,000 lbs specification
- Simple compliance for most municipalities
- Stainless Steel eyes are standard, with lower cost (but stronger) High Strength Galvanized eyes available
- Our large manufacturing capacity means shorter lead times on large and custom orders
- Layout/Drafting/Testing and PE Services available throughout the US and Canada

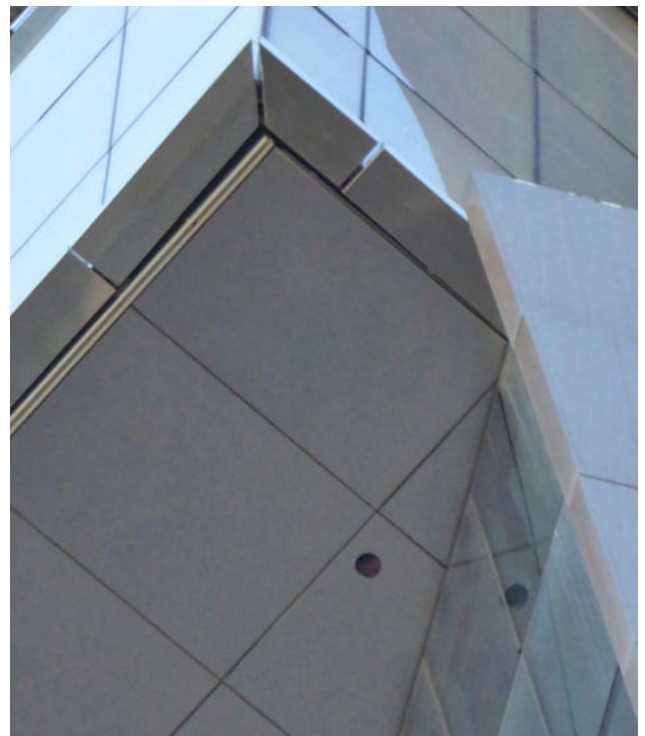
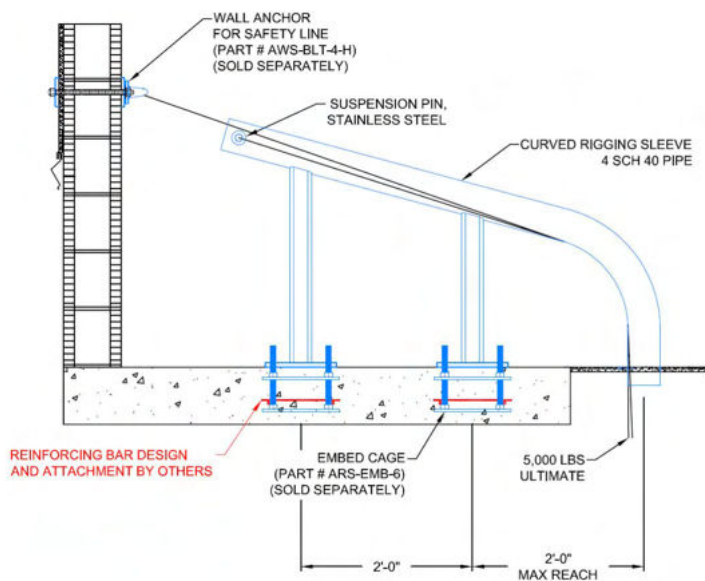
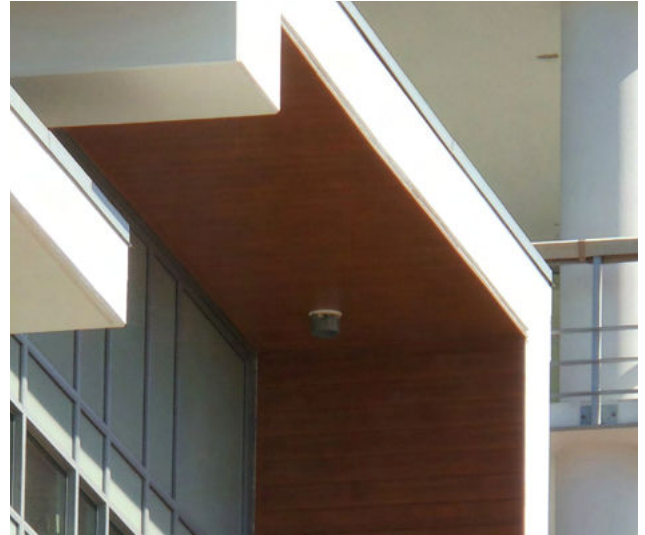




## Rigging Sleeves

Rigging Sleeves allow rigging to negotiate overhangs, balconies, attics, and other rooftop obstructions.

- Direct Suspension and/or Redirection of suspension ropes and safety lines.
- For RDS and Powered Platform use
- Design/Build of Custom Sleeves
- Reduce Visual Impact





# Product Data Sheets

We have a vast catalog of cut sheets and product documents available for your project planning needs.

Davit and Anchor information are available on Sky Climber's website or by calling your Sky Climber sales representative.

Plus, Sky Climber's website houses many resources to help with your product questions. We have a helpful FAQ page plus downloadable user manuals, assembly instructions, product guides and more. Scan the QR codes with your smartphone to visit these pages.

Scan this code with your smartphone to visit our Technical Documents online library



**SKY CLIMBER**  
ACCESS INNOVATIONS SINCE 1955

Sky Climber®, LLC  
1800 Pittsburgh Drive  
Delaware, OH 43015 USA  
Toll Free: 800.255.4629  
Ph: 740.203.3900 Fax: 740.203.3901  
E-mail: info@skyclimber.com  
Web: www.skyclimber.com

**Sky Climber DVT-TRG-HD Series Davits**  
Application: Low Profile Davit Mounted to Mobile Socket, Base and Embed Cage  
Shown With: DVT-SKT-MOB, DVT-BSE-MOB-BLT, and DVT-EMB-6-12

- TOP-ROTATING WITH 360° ROTATION FOR EASE OF RIGGING FOR GROUND-LAUNCHED PLATFORM APPLICATIONS
- MAST HEIGHT AVAILABLE UP TO 8'
- ARM REACH AVAILABLE FROM 6'-6" TO 8'-6"
- AVAILABLE IN 1,000# OR 1,250# CAPACITY
- 2-LINE OR 4-LINE SUSPENSION

6'-6" ARM OUTREACH FROM C.L. OF MAST (8'-6" MAXIMUM REACH)

INTEGRATED TROLLEY FOR ADJUSTABLE SUSPENSION POINT

DAVIT ARM ROTATION LOCKING MECHANISM

LOW PROFILE DAVIT ARM (8' MAST HEIGHT)

DOLLY WHEELS

MOBILE DAVIT SOCKET (DVT-SKT-MOB)

BOLTED MOBILE DAVIT BASE (DVT-BSE-MOB-BLT)

EMBED CAGE FOR C.I.P. APPLICATION (DVT-EMB-6-12)

42" TYP. (H=3')

18" TYP.

REINFORCING BAR DESIGN & ATTACHMENT BY OTHERS

**TYPICAL OVERTURNING MOMENT ON SLAB:**

- = 26,165 FT-LBS (6'-6" ARM REACH, 6' HEIGHT, 1,000# CAPACITY)
- = 32,720 FT-LBS (8'-6" ARM REACH, 6' HEIGHT, 1,250# CAPACITY)
- = 34,220 FT-LBS (8'-6" ARM REACH, 6' HEIGHT, 1,000# CAPACITY)
- = 42,840 FT-LBS (8'-6" ARM REACH, 6' HEIGHT, 1,250# CAPACITY)

**NOTE:** DAVIT IS CAPABLE OF SUPPORTING 5,000 LB. ULTIMATE LOAD AND 1,250 LB. ALLOWABLE LOAD. DAVIT MAY FAIL DUE TO IMPROPER INSTALLATION OR INADEQUATE SUPPORTING STRUCTURE. SERIOUS INJURY OR DEATH MAY RESULT FROM DAVIT FAILURE. INSTALLATION OF DAVIT MUST BE PERFORMED UNDER THE SUPERVISION OF A PROFESSIONAL ENGINEER WITH EXPERIENCE IN SUSPENDED ACCESS EQUIPMENT. ADDITIONALLY, DAVIT SHALL BE TESTED UNDER THE SUPERVISION OF A P.E. AND CERTIFIED BEFORE PLACING INTO SERVICE.

**SPECIFIC CONSTRUCTION DETAILS AND APPLICATIONS VARY. THE STRUCTURE THE DAVIT BASE IS ATTACHED TO MUST BE ADEQUATE TO SUPPORT THE REQUIRED LOADING. THEREFORE, THE CAPACITY OF THE STRUCTURE TO SUPPORT ALL REACTION LOADS AND THE ADEQUACY OF ALL INSTALLATION DETAILS MUST BE CONFIRMED BY THE BUILDING'S ENGINEER OF RECORD PRIOR TO THE INSTALLATION AND USE.**

16117

**SKY CLIMBER**  
ACCESS INNOVATIONS SINCE 1955

Sky Climber®, LLC  
1800 Pittsburgh Drive  
Delaware, OH 43015 USA  
Toll Free: 800.255.4629  
Ph: 740.203.3900 Fax: 740.203.3901  
E-mail: info@skyclimber.com  
Web: www.skyclimber.com

**Sky Climber DVT-TRR-HD Series Davits**  
Application: High Profile Davit Mounted to Mobile Socket, Base and Embed Cage  
Shown With: DVT-SKT-MOB, DVT-BSE-MOB-BLT, and DVT-EMB-6-12

- TOP-ROTATING WITH 360° ROTATION FOR ROOF-LAUNCHED PLATFORM APPLICATIONS
- MAST HEIGHT AVAILABLE UP TO 12'
- ARM REACH AVAILABLE FROM 6'-6" TO 8'-6"
- AVAILABLE IN 1,000# OR 1,250# CAPACITY
- 2-LINE OR 4-LINE SUSPENSION

6'-6" ARM OUTREACH FROM C.L. OF MAST (8'-6" MAXIMUM REACH)

INTEGRATED TROLLEY FOR ADJUSTABLE SUSPENSION POINT

DAVIT ARM ROTATION LOCKING MECHANISM

ADJUSTABLE LIFTING WINCH ATTACHMENT POINT

DOLLY WHEELS

HIGH PROFILE DAVIT ARM (12' MAST HEIGHT)

DAVIT LIFTING WINCH

DAVIT LIFTING WINCH BRACKET

MOBILE DAVIT SOCKET (DVT-SKT-MOB)

BOLTED MOBILE DAVIT BASE (DVT-BSE-MOB-BLT)

EMBED CAGE FOR C.I.P. APPLICATION (DVT-EMB-6-12)

42" TYP. (H=3')

18" TYP.

REINFORCING BAR DESIGN & ATTACHMENT BY OTHERS

**TYPICAL OVERTURNING MOMENT ON SLAB:**

- = 26,660 FT-LBS (6'-6" ARM REACH, 12' HEIGHT, 1,000# CAPACITY)
- = 33,530 FT-LBS (8'-6" ARM REACH, 12' HEIGHT, 1,250# CAPACITY)
- = 34,865 FT-LBS (8'-6" ARM REACH, 12' HEIGHT, 1,000# CAPACITY)
- = 43,850 FT-LBS (8'-6" ARM REACH, 12' HEIGHT, 1,250# CAPACITY)

**NOTE:** DAVIT IS CAPABLE OF SUPPORTING 5,000 LB. ULTIMATE LOAD AND 1,250 LB. ALLOWABLE LOAD. DAVIT MAY FAIL DUE TO IMPROPER INSTALLATION OR INADEQUATE SUPPORTING STRUCTURE. SERIOUS INJURY OR DEATH MAY RESULT FROM DAVIT FAILURE. INSTALLATION OF DAVIT MUST BE PERFORMED UNDER THE SUPERVISION OF A PROFESSIONAL ENGINEER WITH EXPERIENCE IN SUSPENDED ACCESS EQUIPMENT. ADDITIONALLY, DAVIT SHALL BE TESTED UNDER THE SUPERVISION OF A P.E. AND CERTIFIED BEFORE PLACING INTO SERVICE.

**SPECIFIC CONSTRUCTION DETAILS AND APPLICATIONS VARY. THE STRUCTURE THE DAVIT BASE IS ATTACHED TO MUST BE ADEQUATE TO SUPPORT THE REQUIRED LOADING. THEREFORE, THE CAPACITY OF THE STRUCTURE TO SUPPORT ALL REACTION LOADS AND THE ADEQUACY OF ALL INSTALLATION DETAILS MUST BE CONFIRMED BY THE BUILDING'S ENGINEER OF RECORD PRIOR TO THE INSTALLATION AND USE.**

16117

**SKY CLIMBER**  
ACCESS INNOVATIONS SINCE 1955

Sky Climber®, LLC  
1800 Pittsburgh Drive  
Delaware, OH 43015 USA  
Toll Free: 800.255.4629  
Ph: 740.203.3900 Fax: 740.203.3901  
E-mail: info@skyclimber.com  
Web: www.skyclimber.com

**Sky Climber Model: ARS-CIP-10-18**  
Application: Roof Anchor Cast In Place

- A SHORTER TUBE HEIGHT OR DIFFERENT EYE ORIENTATION CAN BE PROVIDED IF NEEDED (STANDARD EYE RUNS PARALLEL TO LONGEST PLATE DIMENSION)
- EYE IS ALSO AVAILABLE IN HIGH-STRENGTH STEEL (GALVANIZED). USE PREFIX "ARG"
- 3,000 PSI (OR GREATER) CONCRETE REQUIRED
- COMPATIBLE WITH VARIOUS REINFORCEMENT DESIGNS (BY OTHERS)

304 STAINLESS EYE WITH 2" OPENING

URETHANE FOAM-FILLED

18" TUBE HEIGHT

6" MIN.

10" x 10" BASE PLATE

7/8" o/c

REINFORCING BAR DESIGN AND ATTACHMENT BY OTHERS (IF REQUIRED)

**NOTE: CUSTOMER IS RESPONSIBLE FOR THE FOLLOWING:**

- ENSURING THAT SKY CLIMBER'S ANCHORAGE PRODUCTS ARE ATTACHED TO AN ADEQUATE AND COMPLIANT STRUCTURE.
- WHEN INSTALLED PROPERLY, SKY CLIMBER'S STANDARD ANCHOR PRODUCTS ARE DESIGNED TO SUPPORT THE FOLLOWING LOADS:
  - 10,000 LB. HANGING LOAD
  - 10,000 LB. PROOF LOAD (TEST LOAD WITHOUT PERMANENT DEFORMATIONS)
  - 10,000 LB. ULTIMATE LOAD (TEST LOAD AT WHICH PERMANENT DEFORMATION MAY OCCUR TO ANCHORAGE WITHOUT FRACTURE OR FAILURE)
 HIGHER CAPACITY PRODUCTS ARE AVAILABLE BY REQUEST IF NEEDED.
- THE UNDERTAKERS THAT ANCHORS MAY FAIL DUE TO IMPROPER INSTALLATION OR INADEQUATE SUPPORTING STRUCTURE. SERIOUS INJURY OR DEATH MAY RESULT FROM ANCHOR FAILURE. INSTALLATION OF ANCHORS MUST BE PERFORMED UNDER THE SUPERVISION OF A PROFESSIONAL ENGINEER WITH EXPERIENCE IN SUSPENDED ACCESS EQUIPMENT. ADDITIONALLY, ANCHORS SHALL BE TESTED AND CERTIFIED UNDER THE SUPERVISION OF A PROFESSIONAL ENGINEER BEFORE BEING INSTALLED INTO SERVICE.
- PROVIDING INFORMATION TO THE OWNER, OR THEIR REPRESENTATIVE, VERIFYING THE ANCHOR LAYOUT COMPLIES WITH APPLICABLE LOCAL AND NATIONAL CODES, REGULATIONS, AND SAFETY STANDARDS FOR THE INTENDED USE.
- ENSURING THAT THE APPLICATION IN WHICH THE ANCHORS ARE USED AND THE STRUCTURE TO WHICH IT IS ATTACHED WILL SUPPORT THE APPLICABLE LOADS INDICATED ON THIS DRAWING. THE STRUCTURE AND FIELD CONNECTION DETAILS MUST BE FULLY DEVELOPED TO RESIST THE LOADS INDICATED ON THE DRAWING INCLUDING MOMENT, SHEAR, AND AXIAL FORCES. THE PRODUCT ENGINEER OF RECORD IS RESPONSIBLE FOR THE DESIGN ELEMENTS OF THE CONNECTION OF THE ANCHORS TO THE STRUCTURE. THESE ELEMENTS INCLUDE, BUT ARE NOT LIMITED TO, THE INTEGRITY OF THE STRUCTURE, FIELD CONNECTION DETAILS INCLUDING ANY FIELD WELDING OR BOLT APPLICATION, MECHANICAL ANCHORS FOR FIELD WELDING, REINFORCING BARS, OR ANY OTHER ELEMENT REQUIRED IN THE CONNECTION TO SUPPORT THE ABOVE LOADS.

SAFETY • SERVICE • SOLUTIONS

# Safety & Training

Sky Climber leads the way in technological product advancements through research and development. Sky Climber continues to lead the industry with training programs through hands-on presentations, video, and online resources - and we are an authorized SAIA Competent Person Training provider.

At Sky Climber, we pride ourselves in providing the highest quality products, services and support, backed by the industry's best warranty.





SAFETY • SERVICE • SOLUTIONS

# Training Customers Since 1980 At Our Facility Or Yours

Having well-trained and knowledgeable associates is critical when using and repairing suspended scaffolding equipment. Sky Climber offers a full array of training programs to meet your product, application and safety requirements. Training can be conducted at our training center or at your facility. Contact us to schedule a training class that meets the needs of your organization.

## One, Two, Three and Four Day Courses Available:

- **Safety, Operator and Application Training** - including theory, hands-on instruction, demonstrations, and top side rigging.
- **Service and Repair Training** - to learn technical aspects of hoist inspections, troubleshooting, repair and service. Use factory established methods to certify and recertify your equipment, and hands-on bench instruction.
- **Custom Training Courses** - customized to meet your needs: Interpreters are available. Discuss requirements with your instructor.

Sky Climber is The Industry Leader in Access Solutions. We have designed, manufactured and marketed suspended access systems used in industrial, commercial construction and maintenance applications since 1955. Sky Climber provides sales and service to customers in North, Central and South America. In 1969, Sky Climber established its European facility in Belgium to provide products and services to Europe and other parts of the world. We offer training solutions that help you every day as you learn from instructors with 60+ years of industry experience

*All Sky Climber, LLC manufactured equipment meets or exceeds OSHA and ANSI requirements.*

### Contact Us

If you have any questions about training or would like to book training for your organizations, please contact Sky Climber® at **740-203-3931** or send an email to **info@skyclimber.com**.

### Visit us online!

Scan this code with your smartphone to visit the Sky Climber Website





# Certification Compliance

Suspended scaffold products used within the United States and its territories are required to comply with the regulations set forth by the United States Occupational Safety and Health Administration (Federal OSHA). These regulations are contained in CFR 1926.451 & 1926.452 Safety and Health Regulations for Construction, and CFR 1910 Occupational Safety and Health Standards – Walking-Working Surfaces. These regulations require suspended scaffold systems and their components be certified by an independent third party to a nationally recognized standard such as Underwriter’s Laboratory (UL) and its UL1322 Standard for Safety for Fabricated Scaffold Planks and Stages, and UL1323 Scaffold Hoists.

Sky Climber, LLC manufactured and supplied products comply with these requirements set forth by Federal OSHA and UL. We also develop our products to comply with the applicable standards promulgated by the American National Standards Institute (ANSI) and other standards writing bodies that pertain to our industry and/or products.

In particular, our hoists, modular work platforms, and portable rigging equipment comply with the following regulations and standards.

## HOISTS:

- American National Standard ANSI/UL 1323 – Scaffold Hoists
  - *Sky Climber hoists are UL classified – File no. SA2861*
- American National Standard ANSI/ASSE A10.8 – Scaffolding Safety Requirements
- OSHA 1926.451 & 1926.452 – Scaffolds – General Requirements

## WORK PLATFORMS:

- American National Standard ANSI/UL 1322 – Fabricated Scaffold Planks and Stages
  - *SSU platforms are UL classified – File no. SA2861*
- American National Standard ANSI/ASSE A10.8 – Scaffolding Safety Requirements
- OSHA 1910.28 – Safety Requirements for Scaffolding
- OSHA 1926.451 – Scaffolds – General Requirements
- OSHA 1926.452 – Scaffolds – Additional Requirements
- OSHA 1910 – Walking-working Surfaces

## PORTABLE RIGGING DEVICES:

- American National Standard ANSI A10.8 – Scaffolding Safety Requirements
- OSHA 1910.28 – Safety Requirements for Scaffolding
- OSHA 1926.451 – Scaffolds – General Requirements
- OSHA 1926.452 – Scaffolds – Additional Requirements

Our rigging products and suspended platform components are designed for at least the 4:1 Factor of Safety required by most if not all of these regulations and standards.

Sky Climber, LLC is committed to providing suspended access equipment which is designed first and foremost for safety and compliance with applicable standards and government regulations. If you have questions or need more information pertaining to the safety and/or compliance of any of our products, please let us know.

# Index

About Sky Climber..... 2

LNx Hoist ..... 5

Compact Electric Hoist ..... 7

Compact Air Hoist / Alpha 2200 Hoist ..... 8

Tower Hoists ..... 9

Wire Rope and Accessories ..... 10

Hoist Accessories ..... 11

Sky Stage Ultra (SSU) Standard Platforms ..... 13

Sky Stage Ultra (SSU) Deck ..... 16

Sky Stage Ultra (SSU) Standard Accessories ..... 18

SSU Accessories for Standard AND Boiler Platforms ..... 21

Sky Stage Ultra (SSU) Boiler Platforms ..... 22

Sky Stage Ultra (SSU) Boiler Accessories ..... 24

SSU Work Cages ..... 25

Low-Profile and Fold-up Work Cages ..... 26

Special Access Baskets, Platforms, Bosun Chair ..... 27

Custom Work Cage Solutions ..... 28

Custom Platform and Work Cage Examples ..... 29

Engineering Services and Solutions ..... 30

Rolling Roof Rigging ..... 31

Sky Rig ..... 32

Roof Rigging Accessories ..... 33

Specialty Rigging Products ..... 35

SkyMaster ..... 37

Single Mast Transport System ..... 39

Fall Arrest Equipment ..... 40

Permanent Access Solutions ..... 41

Powered and PI Platforms ..... 42

Monorail ..... 43

Davits ..... 44

Roof Anchorages ..... 45

Rigging Sleeves ..... 46

Technical Documentation..... 47

Safety and Training Services ..... 48

Certification Compliance..... 50

Access Innovations Since 1955



1600 Pittsburgh Drive Delaware, OH 43015 USA

**Phone:** 740.203.3900

**Toll Free:** 800.255.4629

**Email:** [Info@skyclimber.com](mailto:Info@skyclimber.com)

Copyright © 2025 Sky Climber, LLC. All Rights Reserved.